

Noa

Chair

NOA 725
NOA 727
NOA 727/2
NOA 727/3

Armchair

NOA 726
NOA 728
NOA 728/2
NOA 728/3



Noa 725

Noa 725



Noa 727



Noa 727/2



Noa 727/3



Noa 726



Noa 728



Noa 728/2



Noa 728/3



Noa Collection

Elegance combined with comfort meet though innovative constructional design.
Versatile collection suitable for contract and hospitality use.



NOA 725
ITEM CODE: HERPED725

Polycarbonate back shell in black or white finish and upholstered front seat in grade C with steel tube Ø16mm frame in matching black or white powder coated finish. Stackable 4pcs. Lead time 8 weeks.

H 31,30 **W** 20,30 **D** 21,50 **SH** 18,10
Location: For indoor use
Pieces per Box: 2
Packaging Volume(m3): 0,27
Gross Weight(lb): 17,00



NOA 727
ITEM CODE: HERPED727

Polycarbonate back shell in black or white finish and upholstered front seat in grade C with die-cast aluminum four-star base with casters in matching black or white powder coated finish. Lead time 8 weeks.

H 31,30 **W** 19,30 **D** 20,50 **SH** 18,10
Location: For indoor use
Pieces per Box: 1
Packaging Volume(m3): 0,19
Gross Weight(lb): 21,60



NOA 727/2
ITEM CODE: HERPED727-2

Polycarbonate back shell in black or white finish and upholstered front seat in grade C with die-cast aluminum four-star swivel base with return mechanism in matching black or white powder coated finish. Lead time 8 weeks.

H 31,90 **W** 19,30 **D** 19,70 **SH** 18,50
Location: For indoor use
Pieces per Box: 1
Packaging Volume(m3): 0,19
Gross Weight(lb): 23,15



NOA 727/3
ITEM CODE: HERPED727-3

Polycarbonate back shell in black or white finish and upholstered front seat in grade C die-cast aluminum swivel base with casters and adjustable height in black powder coated finish. Lead time 8 weeks.

H 32,10-36,60 **W** 24,40 **D** 23,60 **SH** 18,70-23,20
Location: For indoor use
Pieces per Box: 1
Packaging Volume(m3): 0,27
Gross Weight(lb): 24,00



NOA 726
ITEM CODE: HERPED726

Polycarbonate back shell in black or white finish and upholstered front seat in grade C with steel tube Ø16mm frame in matching black or white powder coated finish. Stackable 4pcs. Lead time 8 weeks.

H 31,30 **W** 22,60 **D** 20,30 **SH** 18,10 **AH** 25,80
Location: For indoor use
Pieces per Box: 2
Packaging Volume(m3): 0,35
Gross Weight(lb): 18,70



NOA 728
ITEM CODE: HERPED728

Polycarbonate back shell in black or white finish and upholstered front seat in grade C with die-cast aluminum four-star base with casters in matching black or white powder coated finish. Lead time 8 weeks.

H 31,50 **W** 22,80 **D** 20,50 **SH** 18,11 **AH** 25,60
Location: For indoor use
Pieces per Box: 1
Packaging Volume(m3): 0,19
Gross Weight(lb): 24,69



NOA 728/2
ITEM CODE: HERPED728-2

Polycarbonate back shell in black or white finish and upholstered front seat in grade C with die-cast aluminum four-star swivel base with return mechanism in matching black or white powder coated finish. Lead time 8 weeks.

H 31,90 **W** 22,60 **D** 19,70 **SH** 18,50 **AH** 26,40
Location: For indoor use
Pieces per Box: 1
Packaging Volume(m3): 0,19
Gross Weight(lb): 26,45



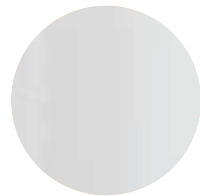
NOA 728/3
ITEM CODE: HERPED728-3

Polycarbonate back shell in black or white finish and upholstered front seat in grade C die-cast aluminum swivel base with casters and adjustable height in black powder coated finish. Lead time 8 weeks.

H 32,10-36,60 **W** 22,60 **D** 19,70 **SH** 18,70-23,20 **AH** 26,00-30,50
Location: For indoor use
Pieces per Box: 1
Packaging Volume(m3): 0,27
Gross Weight(lb): 26,90

METAL FINISHES

Contemporary collection powder coated for indoor use



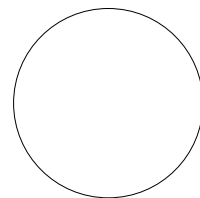
BI100 White



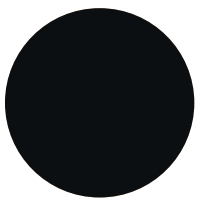
NERO Black

PLASTIC FINISHES

Polycarbonate



BI2

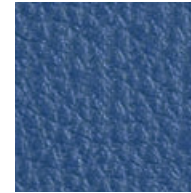


NE1

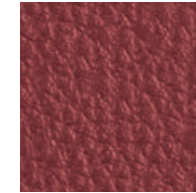
TEXTILES

Contemporary Grade
Grade C

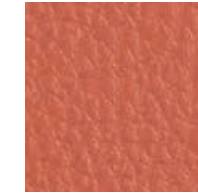
C10-C22(11)



C10



C11



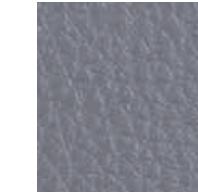
C12



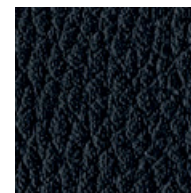
C13



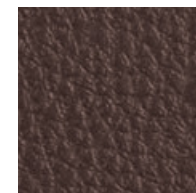
C14



C15



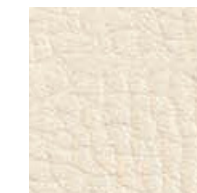
C17



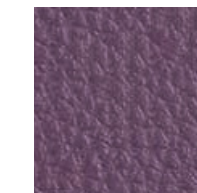
C18



C20



C21

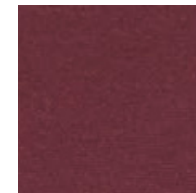


C22

C60-C95(11)



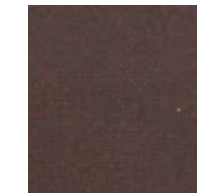
C60



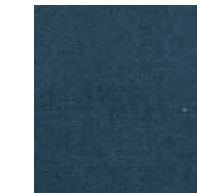
C61



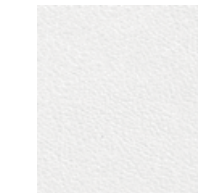
C62



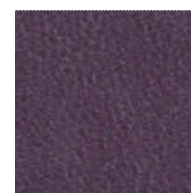
C63



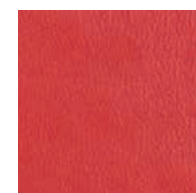
C64



C90



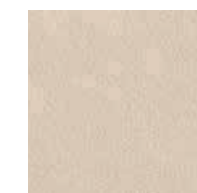
C91



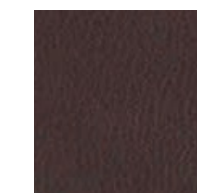
C92



C93

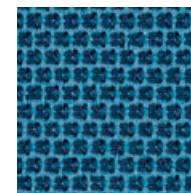


C94

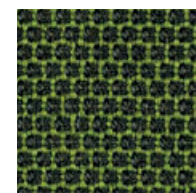


C95

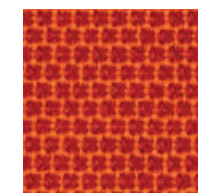
C83-C101 (9)



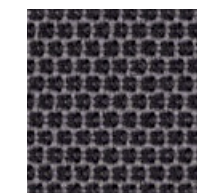
C83



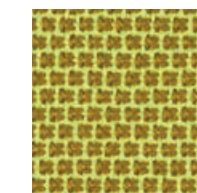
C84



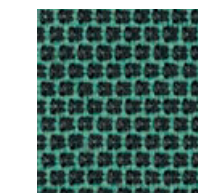
C85



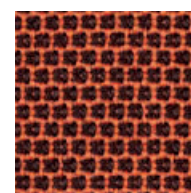
C86



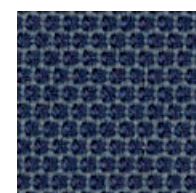
C87



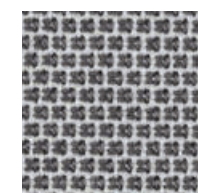
C88



C89



C100



C101