

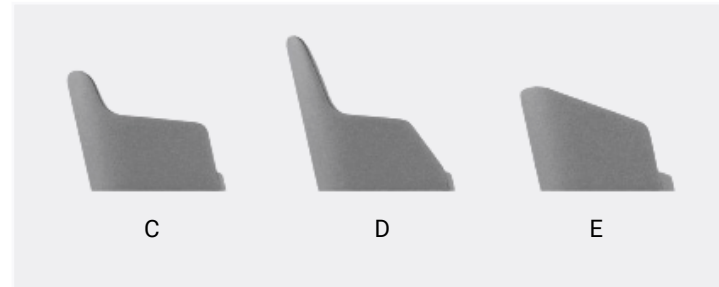
## *Marla Armchair*

MARLA AWC1 ARMCHAIR  
MARLA AOC1 ARMCHAIR  
MARLA AUC1 ARMCHAIR  
MARLA AWC2 ARMCHAIR  
MARLA AOC2 ARMCHAIR  
MARLA AUC2 ARMCHAIR  
MARLA AWC3 ARMCHAIR  
MARLA AUC3 ARMCHAIR  
MARLA AWC4 ARMCHAIR  
MARLA AUC4 ARMCHAIR  
MARLA AWC5 ARMCHAIR  
MARLA AUC5 ARMCHAIR  
MARLA AWC6 ARMCHAIR  
MARLA AUC6 ARMCHAIR  
MARLA AWC7 ARMCHAIR  
MARLA AUC7 ARMCHAIR  
MARLA AWC8 ARMCHAIR  
MARLA AUC8 ARMCHAIR  
MARLA AWC9 ARMCHAIR  
MARLA AUC9 ARMCHAIR  
MARLA AWD1 ARMCHAIR  
MARLA AOD1 ARMCHAIR  
MARLA AUD1 ARMCHAIR  
MARLA AWD2 ARMCHAIR  
MARLA AOD2 ARMCHAIR  
MARLA AUD2 ARMCHAIR  
MARLA AWD3 ARMCHAIR  
MARLA AUD3 ARMCHAIR  
MARLA AWD4 ARMCHAIR  
MARLA AUD4 ARMCHAIR

MARLA AWD5 ARMCHAIR  
MARLA AUD5 ARMCHAIR  
MARLA AWD6 ARMCHAIR  
MARLA AUD6 ARMCHAIR  
MARLA AWD7 ARMCHAIR  
MARLA AUD7 ARMCHAIR  
MARLA AWD8 ARMCHAIR  
MARLA AUD8 ARMCHAIR  
MARLA AWD9 ARMCHAIR  
MARLA AUD9 ARMCHAIR  
MARLA AWE1 ARMCHAIR  
MARLA AOE1 ARMCHAIR  
MARLA AUE1 ARMCHAIR  
MARLA AWE2 ARMCHAIR  
MARLA AOE2 ARMCHAIR  
MARLA AUE2 ARMCHAIR  
MARLA AWE3 ARMCHAIR  
MARLA AUE3 ARMCHAIR  
MARLA AWE4 ARMCHAIR  
MARLA AUE4 ARMCHAIR  
MARLA AWE5 ARMCHAIR  
MARLA AUE5 ARMCHAIR  
MARLA AWE6 ARMCHAIR  
MARLA AUE6 ARMCHAIR  
MARLA AWE7 ARMCHAIR  
MARLA AUE7 ARMCHAIR  
MARLA AWE8 ARMCHAIR  
MARLA AUE8 ARMCHAIR  
MARLA AWE9 ARMCHAIR  
MARLA AUE9 ARMCHAIR



Top options



Fixed base options



Adjustable base options



Marla AUD2 Armchair

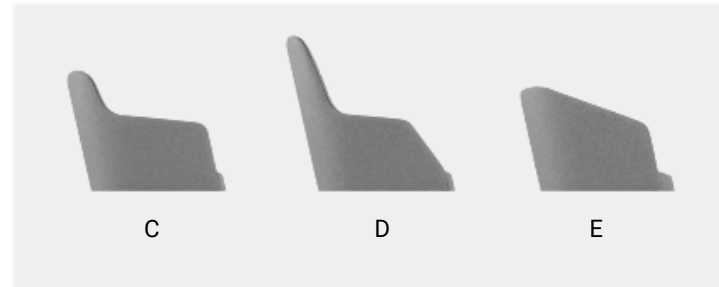


Marla AUC1 Armchair



Marla AWE2 Armchair

Top options



Fixed base options



Adjustable base options



Marla AUD4 Armchair



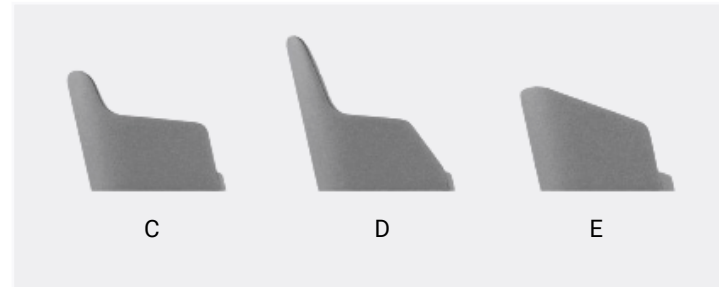
Marla AUC3 Armchair



Marla AWE5 Armchair



Top options



Fixed base options



Adjustable base options



Marla AUC7 Armchair



Marla AUC6 Armchair



Marla AUD9 Armchair

# Marla Armchair Collection



**MARLA AWC1 ARMCHAIR**  
ITEM CODE: HER372AW-C1

Lead time 8-10 weeks. Inspired by mid-century design, outer back in walnut and inner back upholstered with walnut legs. Warranty 5 years against construction defects.

<b>H</b>	32,30	<b>W</b>	22,25	<b>D</b>	22,65	<b>SH</b>	18,70	<b>AH</b>	25,20-26,00
<b>COM(yds):</b>	1,50								
<b>COL(sq ft):</b>	27,00								
<b>Location:</b>	For indoor use								
<b>Pieces per Box:</b>	1								
<b>Packaging Volume(m3):</b>	0,32								
<b>Gross Weight(lb):</b>	22,27								



**MARLA AOC1 ARMCHAIR**  
ITEM CODE: HER372AO-C1

Lead time 8-10 weeks. Inspired by mid-century design, outer back in oak and inner back upholstered with oak legs. Warranty 5 years against construction defects.

<b>H</b>	32,30	<b>W</b>	22,25	<b>D</b>	22,65	<b>SH</b>	18,70	<b>AH</b>	25,20-26,00
<b>COM(yds):</b>	1,50								
<b>COL(sq ft):</b>	27,00								
<b>Location:</b>	For indoor use								
<b>Pieces per Box:</b>	1								
<b>Packaging Volume(m3):</b>	0,32								
<b>Gross Weight(lb):</b>	22,27								



**MARLA AUC1 ARMCHAIR**  
ITEM CODE: HER372AU-C1

Lead time 8-10 weeks. Inspired by mid-century design, fully upholstered shell with oak legs. Available with walnut legs with surcharge of \$150.00 on list price per item. Warranty 5 years against construction defects.

<b>H</b>	32,30	<b>W</b>	22,25	<b>D</b>	22,65	<b>SH</b>	18,70	<b>AH</b>	25,20-26,00
<b>COM(yds):</b>	2,10								
<b>COL(sq ft):</b>	38,00								
<b>Location:</b>	For indoor use								
<b>Pieces per Box:</b>	1								
<b>Packaging Volume(m3):</b>	0,32								
<b>Gross Weight(lb):</b>	23,37								



**MARLA AWC2 ARMCHAIR**  
ITEM CODE: HER372AW-C2

Lead time 8-10 weeks. Inspired by mid-century design, outer back in walnut and inner back upholstered with walnut legs. Warranty 5 years against construction defects.

<b>H</b>	32,30	<b>W</b>	22,25	<b>D</b>	22,65	<b>SH</b>	18,70	<b>AH</b>	25,20-26,00
<b>COM(yds):</b>	1,50								
<b>COL(sq ft):</b>	27,00								
<b>Location:</b>	For indoor use								
<b>Pieces per Box:</b>	1								
<b>Packaging Volume(m3):</b>	0,32								
<b>Gross Weight(lb):</b>	24,69								



**MARLA AOC2 ARMCHAIR**  
ITEM CODE: HER372AO-C2

Lead time 8-10 weeks. Inspired by mid-century design, outer back in oak and inner back upholstered with oak legs. Warranty 5 years against construction defects.

<b>H</b>	32,30	<b>W</b>	22,25	<b>D</b>	22,65	<b>SH</b>	18,70	<b>AH</b>	25,20-26,00
<b>COM(yds):</b>	1,50								
<b>COL(sq ft):</b>	27,00								
<b>Location:</b>	For indoor use								
<b>Pieces per Box:</b>	1								
<b>Packaging Volume(m3):</b>	0,32								
<b>Gross Weight(lb):</b>	24,69								



**MARLA AUC2 ARMCHAIR**  
ITEM CODE: HER372AU-C2

Lead time 8-10 weeks. Inspired by mid-century design, fully upholstered shell with oak legs. Available with walnut legs with surcharge of \$150.00 on list price per item. Warranty 5 years against construction defects.

<b>H</b>	32,30	<b>W</b>	22,25	<b>D</b>	22,65	<b>SH</b>	18,70	<b>AH</b>	25,20-26,00
<b>COM(yds):</b>	2,10								
<b>COL(sq ft):</b>	38,00								
<b>Location:</b>	For indoor use								
<b>Pieces per Box:</b>	1								
<b>Packaging Volume(m3):</b>	0,32								
<b>Gross Weight(lb):</b>	25,79								



**MARLA AWC3 ARMCHAIR**  
ITEM CODE: HER372AW-C3

Lead time 8-10 weeks. Inspired by mid-century design, outer back in walnut and inner back upholstered with black powder coated or chrome metal base. Available with plated brass legs with surcharge of \$150.00. Warranty 5 years against construction defects.

<b>H</b>	32,30	<b>W</b>	22,25	<b>D</b>	22,65	<b>SH</b>	18,70	<b>AH</b>	25,20-26,00
<b>COM(yds):</b>	1,50								
<b>COL(sq ft):</b>	27,00								
<b>Location:</b>	For indoor use								
<b>Pieces per Box:</b>	1								
<b>Packaging Volume(m3):</b>	0,32								
<b>Gross Weight(lb):</b>	23,37								



**MARLA AUC3 ARMCHAIR**  
ITEM CODE: HER372AU-C3

Lead time 8-10 weeks. Inspired by mid-century design, fully upholstered shell with black powder coated or chrome metal base. Available with plated brass legs with surcharge of \$150.00. Warranty 5 years against construction defects.

<b>H</b>	32,30	<b>W</b>	22,25	<b>D</b>	22,65	<b>SH</b>	18,70	<b>AH</b>	25,20-26,00
<b>COM(yds):</b>	2,10								
<b>COL(sq ft):</b>	38,00								
<b>Location:</b>	For indoor use								
<b>Pieces per Box:</b>	1								
<b>Packaging Volume(m3):</b>	0,32								
<b>Gross Weight(lb):</b>	24,47								

# Marla Armchair Collection



**MARLA AWC4 ARMCHAIR**  
ITEM CODE: HER372AW-C4

Lead time 8-10 weeks. Inspired by mid-century design, outer back in walnut and inner back upholstered with black powder coated or chrome swivel metal base. Available with plated brass legs with surcharge of \$150.00. Warranty 5 years against construction defects.

**H 32,30 W 22,25 D 22,65 SH 18,70 AH 25,20-26,00**

<b>COM(yds):</b>	1,50
<b>COL(sq ft):</b>	27,00
<b>Location:</b>	For indoor use
<b>Pieces per Box:</b>	1
<b>Packaging Volume(m3):</b>	0,32
<b>Gross Weight(lb):</b>	27,12



**MARLA AWC6 ARMCHAIR**  
ITEM CODE: HER372AW-C6

Lead time 8-10 weeks. Inspired by mid-century design, outer back in walnut and inner back upholstered with chrome swivel and adjustable height metal base. Warranty 5 years against construction defects.

**H 32,10-35,25 W 22,25 D 22,65 SH 18,30-21,45 AH 25,00-28,95**

<b>COM(yds):</b>	1,50
<b>COL(sq ft):</b>	27,00
<b>Location:</b>	For indoor use
<b>Pieces per Box:</b>	1
<b>Packaging Volume(m3):</b>	0,32
<b>Gross Weight(lb):</b>	41,89



**MARLA AUC4 ARMCHAIR**  
ITEM CODE: HER372AU-C4

Lead time 8-10 weeks. Inspired by mid-century design, fully upholstered shell with black powder coated or chrome metal base. Available with plated brass legs with surcharge of \$150.00. Warranty 5 years against construction defects.

**H 32,30 W 22,25 D 22,65 SH 18,70 AH 25,20-26,00**

<b>COM(yds):</b>	2,10
<b>COL(sq ft):</b>	38,00
<b>Location:</b>	For indoor use
<b>Pieces per Box:</b>	1
<b>Packaging Volume(m3):</b>	0,32
<b>Gross Weight(lb):</b>	28,22



**MARLA AUC6 ARMCHAIR**  
ITEM CODE: HER372AU-C6

Lead time 8-10 weeks. Inspired by mid-century design, fully upholstered shell with chrome swivel and adjustable height metal base. Warranty 5 years against construction defects.

**H 32,10-35,25 W 22,25 D 22,65 SH 18,30-21,45 AH 25,00-28,95**

<b>COM(yds):</b>	2,10
<b>COL(sq ft):</b>	38,00
<b>Location:</b>	For indoor use
<b>Pieces per Box:</b>	1
<b>Packaging Volume(m3):</b>	0,32
<b>Gross Weight(lb):</b>	42,99



**MARLA AWC5 ARMCHAIR**  
ITEM CODE: HER372AW-C5

Lead time 8-10 weeks. Inspired by mid-century design, outer back in walnut and inner back upholstered with black powder coated or chrome swivel metal base. Available with plated brass legs with surcharge of \$150.00. Warranty 5 years against construction defects.

**H 32,30 W 22,25 D 22,65 SH 18,70 AH 25,20-26,00**

<b>COM(yds):</b>	1,50
<b>COL(sq ft):</b>	27,00
<b>Location:</b>	For indoor use
<b>Pieces per Box:</b>	1
<b>Packaging Volume(m3):</b>	0,32
<b>Gross Weight(lb):</b>	38,58



**MARLA AWC7 ARMCHAIR**  
ITEM CODE: HER372AW-C7

Lead time 8-10 weeks. Inspired by mid-century design, outer back in walnut and inner back upholstered with chrome swivel and adjustable height metal base. Warranty 5 years against construction defects.

**H 28,55-33,85 W 22,25 D 22,65 SH 14,75-19,90 AH 21,05-27,35**

<b>COM(yds):</b>	1,50
<b>COL(sq ft):</b>	27,00
<b>Location:</b>	For indoor use
<b>Pieces per Box:</b>	1
<b>Packaging Volume(m3):</b>	0,32
<b>Gross Weight(lb):</b>	23,15



**MARLA AUC5 ARMCHAIR**  
ITEM CODE: HER372AU-C5

Lead time 8-10 weeks. Inspired by mid-century design, fully upholstered shell with black powder coated or chrome metal base. Available with plated brass legs with surcharge of \$150.00. Warranty 5 years against construction defects.

**H 32,30 W 22,25 D 22,65 SH 18,70 AH 25,20-26,00**

<b>COM(yds):</b>	2,10
<b>COL(sq ft):</b>	38,00
<b>Location:</b>	For indoor use
<b>Pieces per Box:</b>	1
<b>Packaging Volume(m3):</b>	0,32
<b>Gross Weight(lb):</b>	39,68



**MARLA AUC7 ARMCHAIR**  
ITEM CODE: HER372AU-C7

Lead time 8-10 weeks. Inspired by mid-century design, fully upholstered shell with chrome swivel and adjustable height metal base. Warranty 5 years against construction defects.

**H 28,55-33,85 W 22,25 D 22,65 SH 14,75-19,90 AH 21,05-27,35**

<b>COM(yds):</b>	2,10
<b>COL(sq ft):</b>	38,00
<b>Location:</b>	For indoor use
<b>Pieces per Box:</b>	1
<b>Packaging Volume(m3):</b>	0,32
<b>Gross Weight(lb):</b>	24,25



# Marla Armchair Collection



**MARLA AWC8 ARMCHAIR**  
ITEM CODE: HER372AW-C8

Lead time 8-10 weeks. Inspired by mid-century design, outer back in walnut and inner back upholstered with swivel and adjustable height metal base in chrome finish and casters. Warranty 5 years against construction defects.

**H** 29,70-33,25 **W** 26,00 **D** 26,00 **SH** 16,55-20,05  
**AH** 22,65-27,15

<b>COM(yds):</b>	1,50
<b>COL(sq ft):</b>	27,00
<b>Location:</b>	For indoor use
<b>Pieces per Box:</b>	1
<b>Packaging Volume(m3):</b>	0,37
<b>Gross Weight(lb):</b>	27,56



**MARLA AUC8 ARMCHAIR**  
ITEM CODE: HER372AU-C8

Lead time 8-10 weeks. Inspired by mid-century design, fully upholstered shell with swivel and adjustable height metal base in chrome finish and casters. Warranty 5 years against construction defects.

**H** 29,70-33,25 **W** 26,00 **D** 26,00 **SH** 16,55-20,05  
**AH** 22,65-27,15

<b>COM(yds):</b>	2,10
<b>COL(sq ft):</b>	38,00
<b>Location:</b>	For indoor use
<b>Pieces per Box:</b>	1
<b>Packaging Volume(m3):</b>	0,37
<b>Gross Weight(lb):</b>	28,66



**MARLA AWC9 ARMCHAIR**  
ITEM CODE: HER372AW-C9

Lead time 8-10 weeks. Inspired by mid-century design, outer back in walnut and inner back upholstered chrome with swivel and adjustable height metal base and casters. Warranty 5 years against construction defects.

**H** 31,70-35,25 **W** 26,00 **D** 26,00 **SH** 17,90-21,45  
**AH** 24,20-28,95

<b>COM(yds):</b>	1,50
<b>COL(sq ft):</b>	27,00
<b>Location:</b>	For indoor use
<b>Pieces per Box:</b>	1
<b>Packaging Volume(m3):</b>	0,37
<b>Gross Weight(lb):</b>	32,85



**MARLA AUC9 ARMCHAIR**  
ITEM CODE: HER372AU-C9

Lead time 8-10 weeks. Inspired by mid-century design, fully upholstered shell with chrome swivel and adjustable height metal base with casters. Warranty 5 years against construction defects.

**H** 31,70-35,25 **W** 26,00 **D** 26,00 **SH** 17,90-21,45  
**AH** 24,20-28,95

<b>COM(yds):</b>	2,10
<b>COL(sq ft):</b>	38,00
<b>Location:</b>	For indoor use
<b>Pieces per Box:</b>	1
<b>Packaging Volume(m3):</b>	0,37
<b>Gross Weight(lb):</b>	33,95



**MARLA AWD1 ARMCHAIR**  
ITEM CODE: HER372AW-D1

Lead time 8-10 weeks. Inspired by mid-century design, outer back in walnut and inner back upholstered with walnut legs. Warranty 5 years against construction defects.

**H** 37,00 **W** 22,25 **D** 23,65 **SH** 18,70 **AH** 25,20-26,00

<b>COM(yds):</b>	1,75
<b>COL(sq ft):</b>	32,00
<b>Location:</b>	For indoor use
<b>Pieces per Box:</b>	1
<b>Packaging Volume(m3):</b>	0,41
<b>Gross Weight(lb):</b>	24,47



**MARLA AOD1 ARMCHAIR**  
ITEM CODE: HER372AO-D1

Lead time 8-10 weeks. Inspired by mid-century design, outer back in oak and inner back upholstered with oak legs. Warranty 5 years against construction defects.

**H** 37,00 **W** 22,25 **D** 23,65 **SH** 18,70 **AH** 25,20-26,00

<b>COM(yds):</b>	1,75
<b>COL(sq ft):</b>	32,00
<b>Location:</b>	For indoor use
<b>Pieces per Box:</b>	1
<b>Packaging Volume(m3):</b>	0,41
<b>Gross Weight(lb):</b>	24,47



**MARLA AUD1 ARMCHAIR**  
ITEM CODE: HER372AU-D1

Lead time 8-10 weeks. Inspired by mid-century design, fully upholstered shell with oak legs. Available with walnut legs with surcharge of \$150.00 on list price per item. Warranty 5 years against construction defects.

**H** 37,00 **W** 22,25 **D** 23,65 **SH** 18,70 **AH** 25,20-26,00

<b>COM(yds):</b>	2,40
<b>COL(sq ft):</b>	43,00
<b>Location:</b>	For indoor use
<b>Pieces per Box:</b>	1
<b>Packaging Volume(m3):</b>	0,41
<b>Gross Weight(lb):</b>	25,57



**MARLA AWD2 ARMCHAIR**  
ITEM CODE: HER372AW-D2

Lead time 8-10 weeks. Inspired by mid-century design, outer back in walnut and inner back upholstered with walnut legs. Warranty 5 years against construction defects.

**H** 37,00 **W** 22,25 **D** 23,65 **SH** 18,70 **AH** 25,20-26,00

<b>COM(yds):</b>	1,75
<b>COL(sq ft):</b>	32,00
<b>Location:</b>	For indoor use
<b>Pieces per Box:</b>	1
<b>Packaging Volume(m3):</b>	0,41
<b>Gross Weight(lb):</b>	26,90

# Marla Armchair Collection



**MARLA AOD2 ARMCHAIR**  
ITEM CODE: HER372AO-D2

Lead time 8-10 weeks. Inspired by mid-century design, outer back in oak and inner back upholstered with oak legs. Warranty 5 years against construction defects.

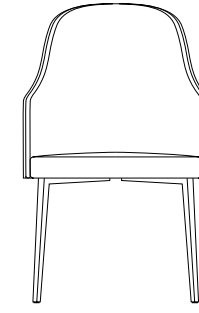
<b>H</b>	37,00	<b>W</b>	22,25	<b>D</b>	23,65	<b>SH</b>	18,70	<b>AH</b>	25,20-26,00
<b>COM(yds):</b>	1,75								
<b>COL(sq ft):</b>	32,00								
<b>Location:</b>	For indoor use								
<b>Pieces per Box:</b>	1								
<b>Packaging Volume(m3):</b>	0,41								
<b>Gross Weight(lb):</b>	26,90								



**MARLA AUD2 ARMCHAIR**  
ITEM CODE: HER372AU-D2

Lead time 8-10 weeks. Inspired by mid-century design, fully upholstered shell with oak legs. Available with walnut legs with surcharge of \$150.00 on list price per item. Warranty 5 years against construction defects.

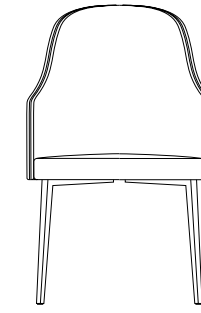
<b>H</b>	37,00	<b>W</b>	22,25	<b>D</b>	23,65	<b>SH</b>	18,70	<b>AH</b>	25,20-26,00
<b>COM(yds):</b>	2,40								
<b>COL(sq ft):</b>	43,00								
<b>Location:</b>	For indoor use								
<b>Pieces per Box:</b>	1								
<b>Packaging Volume(m3):</b>	0,41								
<b>Gross Weight(lb):</b>	28,00								



**MARLA AWD3 ARMCHAIR**  
ITEM CODE: HER372AW-D3

Lead time 8-10 weeks. Inspired by mid-century design, outer back in walnut and inner back upholstered with black powder coated or chrome metal base. Available with plated brass legs with surcharge of \$150.00. Warranty 5 years against construction defects.

<b>H</b>	37,40	<b>W</b>	22,25	<b>D</b>	23,65	<b>SH</b>	18,70	<b>AH</b>	25,20-26,00
<b>COM(yds):</b>	1,75								
<b>COL(sq ft):</b>	32,00								
<b>Location:</b>	For indoor use								
<b>Pieces per Box:</b>	1								
<b>Packaging Volume(m3):</b>	0,41								
<b>Gross Weight(lb):</b>	25,57								



**MARLA AUD3 ARMCHAIR**  
ITEM CODE: HER372AU-D3

Lead time 8-10 weeks. Inspired by mid-century design, fully upholstered shell with black powder coated or chrome metal base. Available with plated brass legs with surcharge of \$150.00. Warranty 5 years against construction defects.

<b>H</b>	37,40	<b>W</b>	22,25	<b>D</b>	23,65	<b>SH</b>	18,70	<b>AH</b>	25,20-26,00
<b>COM(yds):</b>	2,40								
<b>COL(sq ft):</b>	43,00								
<b>Location:</b>	For indoor use								
<b>Pieces per Box:</b>	1								
<b>Packaging Volume(m3):</b>	0,41								
<b>Gross Weight(lb):</b>	26,68								



**MARLA AWD4 ARMCHAIR**  
ITEM CODE: HER372AW-D4

Lead time 8-10 weeks. Inspired by mid-century design, outer back in walnut and inner back upholstered with black powder coated or chrome swivel metal base. Available with plated brass legs with surcharge of \$150.00. Warranty 5 years against construction defects.

<b>H</b>	37,40	<b>W</b>	22,25	<b>D</b>	23,65	<b>SH</b>	18,70	<b>AH</b>	25,20-26,00
<b>COM(yds):</b>	1,75								
<b>COL(sq ft):</b>	32,00								
<b>Location:</b>	For indoor use								
<b>Pieces per Box:</b>	1								
<b>Packaging Volume(m3):</b>	0,41								
<b>Gross Weight(lb):</b>	29,32								



**MARLA AUD4 ARMCHAIR**  
ITEM CODE: HER372AU-D4

Lead time 8-10 weeks. Inspired by mid-century design, fully upholstered shell with black powder coated or chrome metal base. Available with plated brass legs with surcharge of \$150.00. Warranty 5 years against construction defects.

<b>H</b>	37,40	<b>W</b>	22,25	<b>D</b>	23,65	<b>SH</b>	18,70	<b>AH</b>	25,20-26,00
<b>COM(yds):</b>	2,40								
<b>COL(sq ft):</b>	43,00								
<b>Location:</b>	For indoor use								
<b>Pieces per Box:</b>	1								
<b>Packaging Volume(m3):</b>	0,41								
<b>Gross Weight(lb):</b>	30,42								



**MARLA AWD5 ARMCHAIR**  
ITEM CODE: HER372AW-D5

Lead time 8-10 weeks. Inspired by mid-century design, outer back in walnut and inner back upholstered with black powder coated or chrome swivel metal base. Available with plated brass legs with surcharge of \$150.00. Warranty 5 years against construction defects.

<b>H</b>	37,40	<b>W</b>	22,25	<b>D</b>	23,65	<b>SH</b>	18,70	<b>AH</b>	25,20-26,00
<b>COM(yds):</b>	1,75								
<b>COL(sq ft):</b>	32,00								
<b>Location:</b>	For indoor use								
<b>Pieces per Box:</b>	1								
<b>Packaging Volume(m3):</b>	0,41								
<b>Gross Weight(lb):</b>	40,79								



**MARLA AUD5 ARMCHAIR**  
ITEM CODE: HER372AU-D5

Lead time 8-10 weeks. Inspired by mid-century design, fully upholstered shell with black powder coated or chrome metal base. Available with plated brass legs with surcharge of \$150.00. Warranty 5 years against construction defects.

<b>H</b>	37,40	<b>W</b>	22,25	<b>D</b>	23,65	<b>SH</b>	18,70	<b>AH</b>	25,20-26,00
<b>COM(yds):</b>	2,40								
<b>COL(sq ft):</b>	43,00								
<b>Location:</b>	For indoor use								
<b>Pieces per Box:</b>	1								
<b>Packaging Volume(m3):</b>	0,41								
<b>Gross Weight(lb):</b>	41,89								



# Marla Armchair Collection



**MARLA AWD6 ARMCHAIR**  
ITEM CODE: HER372AW-D6

Lead time 8-10 weeks. Inspired by mid-century design, outer back in walnut and inner back upholstered with chrome swivel and adjustable height metal base. Warranty 5 years against construction defects.

**H** 36,80-39,95 **W** 22,25 **D** 23,65 **SH** 18,30-21,45  
**AH** 25,00-28,95

**COM(yds):** 1,75  
**COL(sq ft):** 32,00  
**Location:** For indoor use  
**Pieces per Box:** 1  
**Packaging Volume(m3):** 0,41  
**Gross Weight(lb):** 44,09



**MARLA AWD8 ARMCHAIR**  
ITEM CODE: HER372AW-D8

Lead time 8-10 weeks. Inspired by mid-century design, outer back in walnut and inner back upholstered with swivel and adjustable height metal base in chrome finish and casters. Warranty 5 years against construction defects.

**H** 34,85-38,40 **W** 26,00 **D** 26,00 **SH** 16,55-20,05  
**AH** 22,65-27,15

**COM(yds):** 1,75  
**COL(sq ft):** 32,00  
**Location:** For indoor use  
**Pieces per Box:** 1  
**Packaging Volume(m3):** 0,41  
**Gross Weight(lb):** 29,76



**MARLA AUD6 ARMCHAIR**  
ITEM CODE: HER372AU-D6

Lead time 8-10 weeks. Inspired by mid-century design, fully upholstered shell with chrome swivel and adjustable height metal base. Warranty 5 years against construction defects.

**H** 36,80-39,95 **W** 22,25 **D** 23,65 **SH** 18,30-21,45  
**AH** 25,00-28,95

**COM(yds):** 2,40  
**COL(sq ft):** 43,00  
**Location:** For indoor use  
**Pieces per Box:** 1  
**Packaging Volume(m3):** 0,41  
**Gross Weight(lb):** 45,19



**MARLA AUD8 ARMCHAIR**  
ITEM CODE: HER372AU-D8

Lead time 8-10 weeks. Inspired by mid-century design, fully upholstered shell with swivel and adjustable height metal base in chrome finish and casters. Warranty 5 years against construction defects.

**H** 34,85-38,40 **W** 26,00 **D** 26,00 **SH** 16,55-20,05  
**AH** 22,65-27,15

**COM(yds):** 2,40  
**COL(sq ft):** 43,00  
**Location:** For indoor use  
**Pieces per Box:** 1  
**Packaging Volume(m3):** 0,41  
**Gross Weight(lb):** 30,86



**MARLA AWD7 ARMCHAIR**  
ITEM CODE: HER372AW-D7

Lead time 8-10 weeks. Inspired by mid-century design, outer back in walnut and inner back upholstered with chrome swivel and adjustable height metal base. Warranty 5 years against construction defects.

**H** 33,45-38,75 **W** 22,25 **D** 23,65 **SH** 14,75-19,90  
**AH** 21,05-27,35

**COM(yds):** 1,75  
**COL(sq ft):** 32,00  
**Location:** For indoor use  
**Pieces per Box:** 1  
**Packaging Volume(m3):** 0,41  
**Gross Weight(lb):** 25,35



**MARLA AWD9 ARMCHAIR**  
ITEM CODE: HER372AW-D9

Lead time 8-10 weeks. Inspired by mid-century design, outer back in walnut and inner back upholstered chrome with swivel and adjustable height metal base and casters. Warranty 5 years against construction defects.

**H** 36,60-40,15 **W** 26,00 **D** 26,00 **SH** 17,90-21,45  
**AH** 24,20-28,95

**COM(yds):** 1,75  
**COL(sq ft):** 32,00  
**Location:** For indoor use  
**Pieces per Box:** 1  
**Packaging Volume(m3):** 0,55  
**Gross Weight(lb):** 35,05



**MARLA AUD7 ARMCHAIR**  
ITEM CODE: HER372AU-D7

Lead time 8-10 weeks. Inspired by mid-century design, fully upholstered shell with chrome swivel and adjustable height metal base. Warranty 5 years against construction defects.

**H** 33,45-38,75 **W** 22,25 **D** 23,65 **SH** 14,75-19,90  
**AH** 21,05-27,35

**COM(yds):** 2,40  
**COL(sq ft):** 43,00  
**Location:** For indoor use  
**Pieces per Box:** 1  
**Packaging Volume(m3):** 0,41  
**Gross Weight(lb):** 26,46



**MARLA AUD9 ARMCHAIR**  
ITEM CODE: HER372AU-D9

Lead time 8-10 weeks. Inspired by mid-century design, fully upholstered shell with chrome swivel and adjustable height metal base with casters. Warranty 5 years against construction defects.

**H** 36,60-40,15 **W** 26,00 **D** 26,00 **SH** 17,90-21,45  
**AH** 24,20-28,95

**COM(yds):** 2,40  
**COL(sq ft):** 43,00  
**Location:** For indoor use  
**Pieces per Box:** 1  
**Packaging Volume(m3):** 0,55  
**Gross Weight(lb):** 36,16

# Marla Armchair Collection



**MARLA AWE1 ARMCHAIR**  
ITEM CODE: HER372AW-E1

Lead time 8-10 weeks. Inspired by mid-century design, outer back in walnut and inner back upholstered with walnut legs. Warranty 5 years against construction defects.

<b>H</b>	29,90	<b>W</b>	22,25	<b>D</b>	22,25	<b>SH</b>	18,70	<b>AH</b>	24,40-29,90
<b>COM(yds):</b>	1,50								
<b>COL(sq ft):</b>	27,00								
<b>Location:</b>	For indoor use								
<b>Pieces per Box:</b>	1								
<b>Packaging Volume(m3):</b>	0,32								
<b>Gross Weight(lb):</b>	22,27								



**MARLA AOE1 ARMCHAIR**  
ITEM CODE: HER372AO-E1

Lead time 8-10 weeks. Inspired by mid-century design, outer back in oak and inner back upholstered with oak legs. Warranty 5 years against construction defects.

<b>H</b>	29,90	<b>W</b>	22,25	<b>D</b>	22,25	<b>SH</b>	18,70	<b>AH</b>	24,40-29,90
<b>COM(yds):</b>	1,50								
<b>COL(sq ft):</b>	27,00								
<b>Location:</b>	For indoor use								
<b>Pieces per Box:</b>	1								
<b>Packaging Volume(m3):</b>	0,32								
<b>Gross Weight(lb):</b>	22,27								



**MARLA AUE1 ARMCHAIR**  
ITEM CODE: HER372AU-E1

Lead time 8-10 weeks. Inspired by mid-century design, fully upholstered shell with oak legs. Available with walnut legs with surcharge of \$150.00 on list price per item. Warranty 5 years against construction defects.

<b>H</b>	29,90	<b>W</b>	22,25	<b>D</b>	22,25	<b>SH</b>	18,70	<b>AH</b>	24,40-29,90
<b>COM(yds):</b>	2,10								
<b>COL(sq ft):</b>	38,00								
<b>Location:</b>	For indoor use								
<b>Pieces per Box:</b>	1								
<b>Packaging Volume(m3):</b>	0,32								
<b>Gross Weight(lb):</b>	23,37								



**MARLA AWE2 ARMCHAIR**  
ITEM CODE: HER372AW-E2

Lead time 8-10 weeks. Inspired by mid-century design, outer back in walnut and inner back upholstered with walnut legs. Warranty 5 years against construction defects.

<b>H</b>	29,90	<b>W</b>	22,25	<b>D</b>	22,25	<b>SH</b>	18,70	<b>AH</b>	24,40-29,90
<b>COM(yds):</b>	1,50								
<b>COL(sq ft):</b>	27,00								
<b>Location:</b>	For indoor use								
<b>Pieces per Box:</b>	1								
<b>Packaging Volume(m3):</b>	0,32								
<b>Gross Weight(lb):</b>	24,69								



**MARLA AOE2 ARMCHAIR**  
ITEM CODE: HER372AO-E2

Lead time 8-10 weeks. Inspired by mid-century design, outer back in oak and inner back upholstered with oak legs. Warranty 5 years against construction defects.

<b>H</b>	29,90	<b>W</b>	22,25	<b>D</b>	22,25	<b>SH</b>	18,70	<b>AH</b>	24,40-29,90
<b>COM(yds):</b>	1,50								
<b>COL(sq ft):</b>	27,00								
<b>Location:</b>	For indoor use								
<b>Pieces per Box:</b>	1								
<b>Packaging Volume(m3):</b>	0,32								
<b>Gross Weight(lb):</b>	24,69								



**MARLA AUE2 ARMCHAIR**  
ITEM CODE: HER372AU-E2

Lead time 8-10 weeks. Inspired by mid-century design, fully upholstered shell with oak legs. Available with walnut legs with surcharge of \$150.00 on list price per item. Warranty 5 years against construction defects.

<b>H</b>	29,90	<b>W</b>	22,25	<b>D</b>	22,25	<b>SH</b>	18,70	<b>AH</b>	24,40-29,90
<b>COM(yds):</b>	2,10								
<b>COL(sq ft):</b>	38,00								
<b>Location:</b>	For indoor use								
<b>Pieces per Box:</b>	1								
<b>Packaging Volume(m3):</b>	0,32								
<b>Gross Weight(lb):</b>	25,79								



**MARLA AWE3 ARMCHAIR**  
ITEM CODE: HER372AW-E3

Lead time 8-10 weeks. Inspired by mid-century design, outer back in walnut and inner back upholstered with black powder coated or chrome metal base. Available with plated brass legs with surcharge of \$150.00. Warranty 5 years against construction defects.

<b>H</b>	30,30	<b>W</b>	22,25	<b>D</b>	22,25	<b>SH</b>	18,70	<b>AH</b>	24,40-29,90
<b>COM(yds):</b>	1,50								
<b>COL(sq ft):</b>	27,00								
<b>Location:</b>	For indoor use								
<b>Pieces per Box:</b>	1								
<b>Packaging Volume(m3):</b>	0,32								
<b>Gross Weight(lb):</b>	23,37								



**MARLA AUE3 ARMCHAIR**  
ITEM CODE: HER372AU-E3

Lead time 8-10 weeks. Inspired by mid-century design, fully upholstered shell with black powder coated or chrome metal base. Available with plated brass legs with surcharge of \$150.00. Warranty 5 years against construction defects.

<b>H</b>	30,30	<b>W</b>	22,25	<b>D</b>	22,25	<b>SH</b>	18,70	<b>AH</b>	24,40-29,90
<b>COM(yds):</b>	2,10								
<b>COL(sq ft):</b>	38,00								
<b>Location:</b>	For indoor use								
<b>Pieces per Box:</b>	1								
<b>Packaging Volume(m3):</b>	0,32								
<b>Gross Weight(lb):</b>	24,47								

# Marla Armchair Collection



**MARLA AWE4 ARMCHAIR**  
ITEM CODE: HER372AW-E4

Lead time 8-10 weeks. Inspired by mid-century design, outer back in walnut and inner back upholstered with black powder coated or chrome swivel metal base. Available with plated brass legs with surcharge of \$150.00. Warranty 5 years against construction defects.

**H 29,90 W 22,25 D 22,25 SH 18,70 AH 24,40-29,90**

<b>COM(yds):</b>	1,50
<b>COL(sq ft):</b>	27,00
<b>Location:</b>	For indoor use
<b>Pieces per Box:</b>	1
<b>Packaging Volume(m3):</b>	0,32
<b>Gross Weight(lb):</b>	27,12



**MARLA AUE4 ARMCHAIR**  
ITEM CODE: HER372AU-E4

Lead time 8-10 weeks. Inspired by mid-century design, fully upholstered shell with black powder coated or chrome metal base. Available with plated brass legs with surcharge of \$150.00. Warranty 5 years against construction defects.

**H 29,90 W 22,25 D 22,25 SH 18,70 AH 24,40-29,90**

<b>COM(yds):</b>	2,10
<b>COL(sq ft):</b>	38,00
<b>Location:</b>	For indoor use
<b>Pieces per Box:</b>	1
<b>Packaging Volume(m3):</b>	0,32
<b>Gross Weight(lb):</b>	28,22



**MARLA AWE5 ARMCHAIR**  
ITEM CODE: HER372AW-E5

Lead time 8-10 weeks. Inspired by mid-century design, outer back in walnut and inner back upholstered with black powder coated or chrome swivel metal base. Available with plated brass legs with surcharge of \$150.00. Warranty 5 years against construction defects.

**H 29,90 W 22,25 D 22,25 SH 18,70 AH 24,40-29,90**

<b>COM(yds):</b>	1,50
<b>COL(sq ft):</b>	27,00
<b>Location:</b>	For indoor use
<b>Pieces per Box:</b>	1
<b>Packaging Volume(m3):</b>	0,32
<b>Gross Weight(lb):</b>	38,58



**MARLA AUE5 ARMCHAIR**  
ITEM CODE: HER372AU-E5

Lead time 8-10 weeks. Inspired by mid-century design, fully upholstered shell with black powder coated or chrome metal base. Available with plated brass legs with surcharge of \$150.00. Warranty 5 years against construction defects.

**H 29,90 W 22,25 D 22,25 SH 18,70 AH 24,40-29,90**

<b>COM(yds):</b>	2,10
<b>COL(sq ft):</b>	38,00
<b>Location:</b>	For indoor use
<b>Pieces per Box:</b>	1
<b>Packaging Volume(m3):</b>	0,32
<b>Gross Weight(lb):</b>	39,68



**MARLA AWE6 ARMCHAIR**  
ITEM CODE: HER372AW-E6

Lead time 8-10 weeks. Inspired by mid-century design, outer back in walnut and inner back upholstered with chrome swivel and adjustable height metal base. Warranty 5 years against construction defects.

**H 29,75-32,85 W 22,25 D 22,25 SH 18,30-21,45 AH 24,20-32,85**

<b>COM(yds):</b>	1,50
<b>COL(sq ft):</b>	27,00
<b>Location:</b>	For indoor use
<b>Pieces per Box:</b>	1
<b>Packaging Volume(m3):</b>	0,32
<b>Gross Weight(lb):</b>	41,89



**MARLA AUE6 ARMCHAIR**  
ITEM CODE: HER372AU-E6

Lead time 8-10 weeks. Inspired by mid-century design, fully upholstered shell with chrome swivel and adjustable height metal base. Warranty 5 years against construction defects.

**H 29,75-32,85 W 22,25 D 22,25 SH 18,30-21,45 AH 24,20-32,85**

<b>COM(yds):</b>	2,10
<b>COL(sq ft):</b>	38,00
<b>Location:</b>	For indoor use
<b>Pieces per Box:</b>	1
<b>Packaging Volume(m3):</b>	0,32
<b>Gross Weight(lb):</b>	42,99



**MARLA AWE7 ARMCHAIR**  
ITEM CODE: HER372AW-E7

Lead time 8-10 weeks. Inspired by mid-century design, outer back in walnut and inner back upholstered with chrome swivel and adjustable height metal base. Warranty 5 years against construction defects.

**H 26,75-31,50 W 22,25 D 22,65 SH 14,75-19,90 AH 21,25-31,90**

<b>COM(yds):</b>	1,50
<b>COL(sq ft):</b>	27,00
<b>Location:</b>	For indoor use
<b>Pieces per Box:</b>	1
<b>Packaging Volume(m3):</b>	0,32
<b>Gross Weight(lb):</b>	23,15



**MARLA AUE7 ARMCHAIR**  
ITEM CODE: HER372AU-E7

Lead time 8-10 weeks. Inspired by mid-century design, fully upholstered shell with chrome swivel and adjustable height metal base. Warranty 5 years against construction defects.

**H 26,75-31,50 W 22,25 D 22,65 SH 14,75-19,90 AH 21,25-31,90**

<b>COM(yds):</b>	2,10
<b>COL(sq ft):</b>	38,00
<b>Location:</b>	For indoor use
<b>Pieces per Box:</b>	1
<b>Packaging Volume(m3):</b>	0,32
<b>Gross Weight(lb):</b>	24,25



# Marla Armchair Collection



**MARLA AWE8 ARMCHAIR**  
ITEM CODE: HER372AW-E8

Lead time 8-10 weeks. Inspired by mid-century design, outer back in walnut and inner back upholstered with swivel and adjustable height metal base in chrome finish and casters. Warranty 5 years against construction defects.

**H** 27,55-31,10 **W** 26,00 **D** 26,00 **SH** 16,55-20,05  
**AH** 22,05-31,10

**COM(yds):** 1,50  
**COL(sq ft):** 27,00  
**Location:** For indoor use  
**Pieces per Box:** 1  
**Packaging Volume(m3):** 0,37  
**Gross Weight(lb):** 27,56



**MARLA AUE8 ARMCHAIR**  
ITEM CODE: HER372AU-E8

Lead time 8-10 weeks. Inspired by mid-century design, fully upholstered shell with swivel and adjustable height metal base in chrome finish and casters. Warranty 5 years against construction defects.

**H** 27,55-31,10 **W** 26,00 **D** 26,00 **SH** 16,55-20,05  
**AH** 22,05-31,10

**COM(yds):** 2,10  
**COL(sq ft):** 38,00  
**Location:** For indoor use  
**Pieces per Box:** 1  
**Packaging Volume(m3):** 0,37  
**Gross Weight(lb):** 28,66



**MARLA AWE9 ARMCHAIR**  
ITEM CODE: HER372AW-E9

Lead time 8-10 weeks. Inspired by mid-century design, outer back in walnut and inner back upholstered chrome with swivel and adjustable height metal base and casters. Warranty 5 years against construction defects.

**H** 29,55-33,05 **W** 26,00 **D** 26,00 **SH** 17,90-21,45  
**AH** 24,00-33,05

**COM(yds):** 1,50  
**COL(sq ft):** 27,00  
**Location:** For indoor use  
**Pieces per Box:** 1  
**Packaging Volume(m3):** 0,37  
**Gross Weight(lb):** 32,85



**MARLA AUE9 ARMCHAIR**  
ITEM CODE: HER372AU-E9

Lead time 8-10 weeks. Inspired by mid-century design, fully upholstered shell with chrome swivel and adjustable height metal base with casters. Warranty 5 years against construction defects.

**H** 29,55-33,05 **W** 26,00 **D** 26,00 **SH** 17,90-21,45  
**AH** 24,00-33,05

**COM(yds):** 2,10  
**COL(sq ft):** 38,00  
**Location:** For indoor use  
**Pieces per Box:** 1  
**Packaging Volume(m3):** 0,37  
**Gross Weight(lb):** 33,95

# Marla Armchair Collection

## METAL FINISHES

Modern and Elegance collections



Black Powder Coated



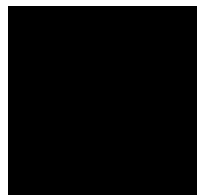
Polished Chrome



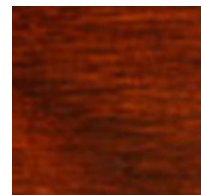
Plated Brass

## WOOD FINISHES

Modern and Elegance collections



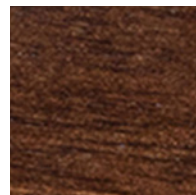
Black\_25717



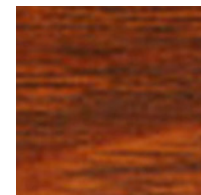
Cappuccino\_25718



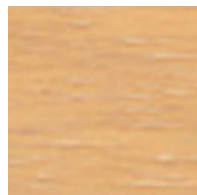
Congac\_25517



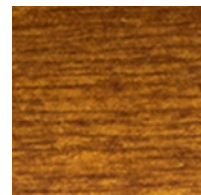
Elle\_27162



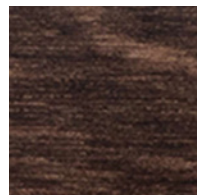
Honey\_25716



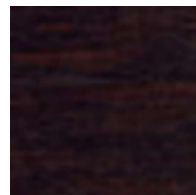
Natural\_25528



Safari\_27824



Walnut\_25397



Wenge\_25516



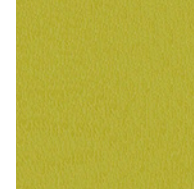
White\_Wash\_25719

## TEXTILES

Modern and Elegance Grade

### Grade 1

Ennis Fabrics



Turner (27)

### Grade 2

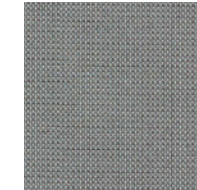
Mayer Fabrics



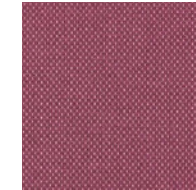
Caressa (59)



Fedora (25)



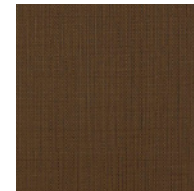
Optic (15)



Variant (16)

### Grade 3

Momentum



Beeline EPU (24)



Cover Cloth (24)



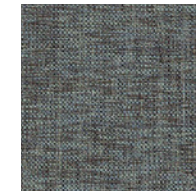
Endurance EPU (36)



Faux Felt (16)



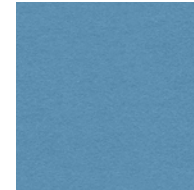
Faux Mo (9)



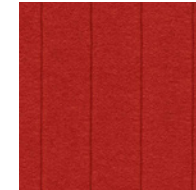
Kit (13)

### Grade 4

Camira Fabrics



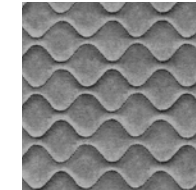
Blazer (50)



Synergy Quilt Channel (8)



Synergy Quilt Chevron (8)



Synergy Quilt Hourglass (8)