

# *Lada*

LADA L14 ARMCHAIR  
LADA P6 ARMCHAIR  
LADA R10 ARMCHAIR  
LADA D10 ARMCHAIR



Lada P6 Armchair

*Lada L14 Armchair*



*Lada R10 Armchair*



*Lada D10 Armchair*



# Lada Collection



**LADA L14 ARMCHAIR**  
ITEM CODE: HER810AM-L14

Molded foam shell with beech wood base. Lead time 8 weeks.

**H 33,50 W 24,80 D 24.40 SH 18,10 AH 24,40**

**COM(yds):** 2,00  
**COL(sq ft):** 36,00  
**Location:** For indoor use  
**Pieces per Box:** 1  
**Packaging Volume(m3):** 0,26  
**Gross Weight(lb):** 24,70



**LADA P6 ARMCHAIR**  
ITEM CODE: HER810AM-P6

Molded foam shell with swivel polished chrome base. Lead time 8 weeks.

**H 33,85 W 24,80 D 24.40 SH 18,50 AH 24,80**

**COM(yds):** 2,00  
**COL(sq ft):** 36,00  
**Location:** For indoor use  
**Pieces per Box:** 1  
**Packaging Volume(m3):** 0,26  
**Gross Weight(lb):** 26,25



**LADA R10 ARMCHAIR**  
ITEM CODE: HER810AM-R10

Molded foam shell with swivel polished chrome base with casters in adjustable height. Lead time 8 weeks.

**H 31,90-35,00 W 27,50 D 24.40 SH 16,55-20,00 AH 22,85-26,15**

**COM(yds):** 2,00  
**COL(sq ft):** 36,00  
**Location:** For indoor use  
**Pieces per Box:** 1  
**Packaging Volume(m3):** 0,26  
**Gross Weight(lb):** 26,45



**LADA D10 ARMCHAIR**  
ITEM CODE: HER810AM-D10

Molded foam shell with brushed stainless steel swivel base with return mechanism. Lead time 8 weeks.

**H 31,90 W 24,80 D 24.40 SH 16,55 AH 22,85**

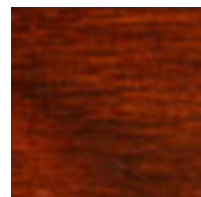
**COM(yds):** 2,00  
**COL(sq ft):** 36,00  
**Location:** For indoor use  
**Pieces per Box:** 1  
**Packaging Volume(m3):** 0,26  
**Gross Weight(lb):** 46,10

**WOOD FINISHES**

Modern and Elegance collections



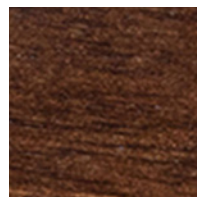
Black\_25717



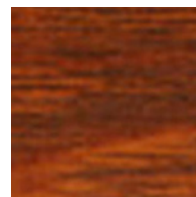
Cappuccino\_25718



Congac\_25517



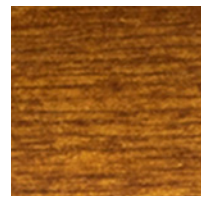
Elle\_27162



Honey\_25716



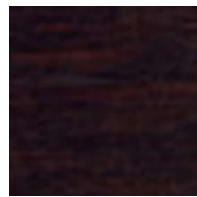
Natural\_25528



Safari\_27824



Walnut\_25397



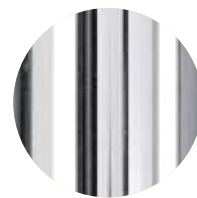
Wenge\_25516



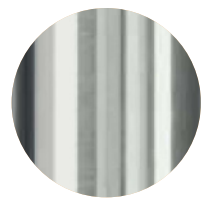
White\_Wash\_25719

**METAL FINISHES**

Contemporary collections



CR  
Chromed steel



AC  
Brushed s/steel

**TEXTILES**

Modern and Elegance Grade

**Grade 1**

Ennis Fabrics



Turner (27)

**Grade 2**

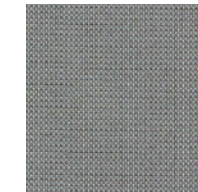
Mayer Fabrics



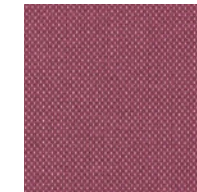
Caressa (59)



Fedora (25)



Optic (15)



Variant (16)

**Grade 3**

Momentum



Beeline EPU (24)



Cover Cloth (24)



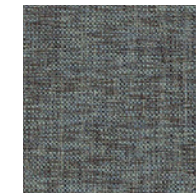
Endurance EPU (36)



Faux Felt (16)



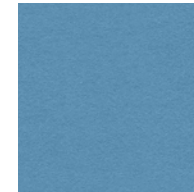
Faux Mo (9)



Kit (13)

**Grade 4**

Camira Fabrics



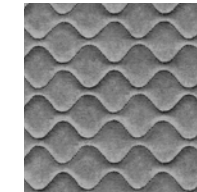
Blazer (50)



Synergy Quilt  
Channel (8)



Synergy Quilt  
Chevron (8)



Synergy Quilt  
Hourglass (8)