

Kuadra

Chair

KUADRA 1298
KUADRA 1281
KUADRA 1291
KUADRA 1151
KUADRA 1158
KUADRA 1101
KUADRA 1331
KUADRA 1328
KUADRA 1321
KUADRA 1321/A
KUADRA 1051
KUADRA 1058
KUADRA 1010
KUADRA 1329
KUADRA 1329/TP

Armchair

KUADRA 1115
KUADRA 1335
KUADRA 1055
KUADRA 1285

Stool

KUADRA 1112
KUADRA 1116
KUADRA 1102
KUADRA 1106
KUADRA 1332
KUADRA 1336
KUADRA 1322
KUADRA 1326
KUADRA 1132
KUADRA 1136
KUADRA 1122
KUADRA 1126
KUADRA 4429
KUADRA 1332-F
KUADRA 1322-F
KUADRA 1336-F
KUADRA 1326-F
KUADRA 4427-F
KUADRA 4429-F



Kuadra 1298



Kuadra 1281



Kuadra 1291



Kuadra 1285



Kuadra 4429



Kuadra 1332-F



Kuadra 1322-F



Kuadra 1336-F



Kuadra 1326-F



Kuadra 4427-F



Kuadra 4429-F



Kuadra 1151



Kuadra 1151
Kuadra 1116

Kuadra 1158



Kuadra 1101



Kuadra 1331



Kuadra 1328



Kuadra 1321



AFRA
FURNITURE

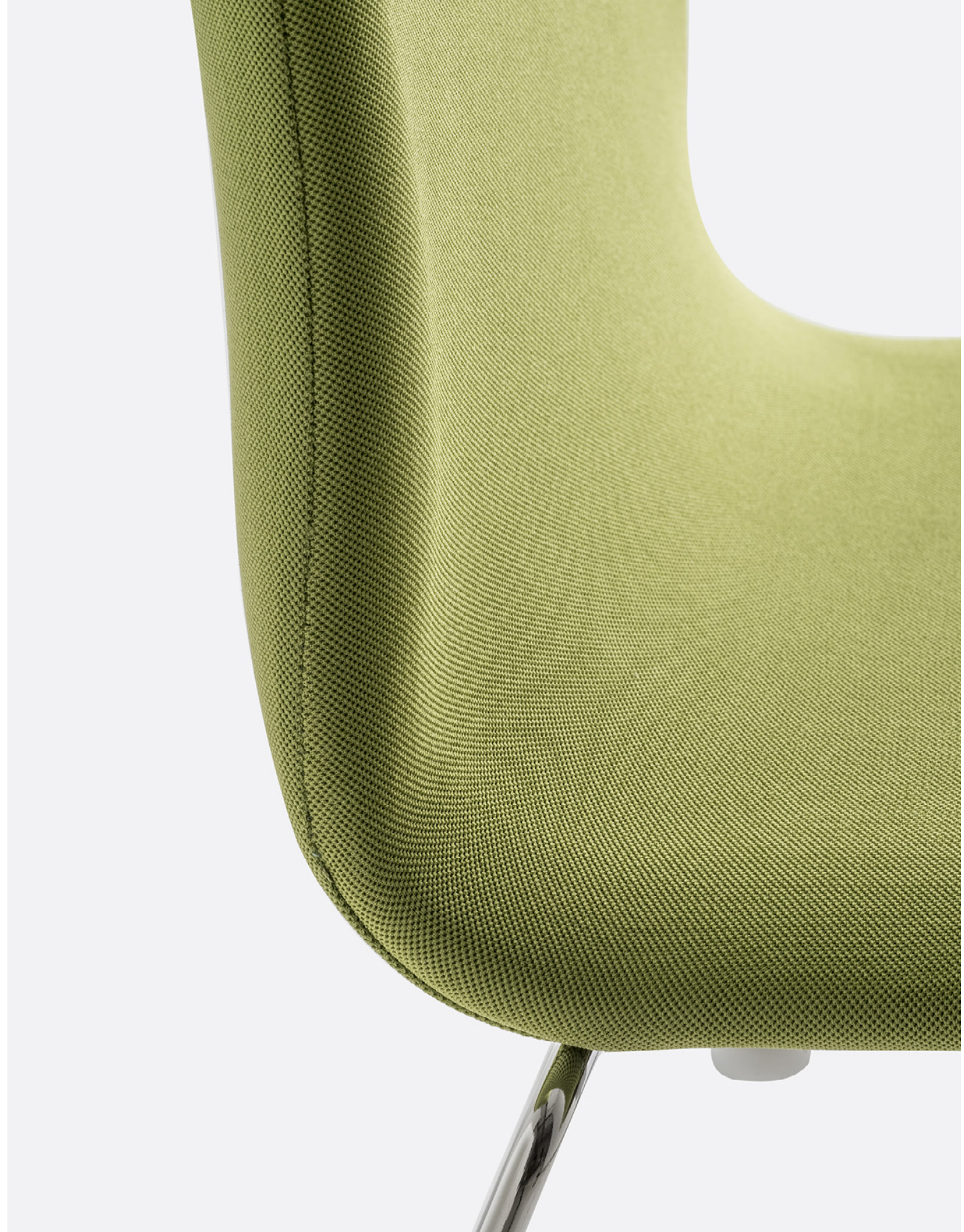
Kuadra 1321/A



Kuadra 1051



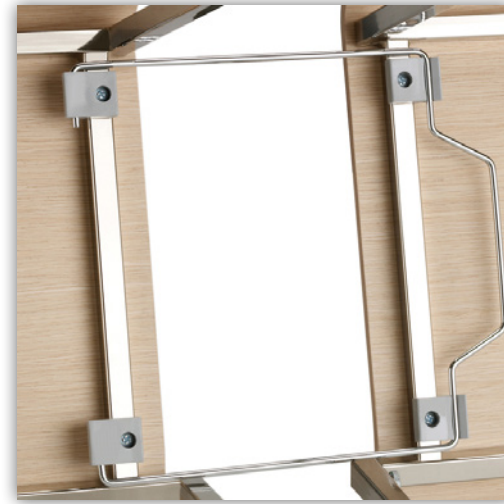
Kuadra 1058



Kuadra 1010



Kuadra 1329



Kuadra 1115



Kuadra 1335



Kuadra 1055



Kuadra 1112



Kuadra 1116



Kuadra 1102



Kuadra 1106



Kuadra 1332



Kuadra 1336



Kuadra 1322



Kuadra 1326



Kuadra 1132



Kuadra 1136



Kuadra 1122



Kuadra 1126



Kuadra Collection

Multi-functional collection. Simple and iconic shell with innovative curved backrest.



KUADRA 1010
ITEM CODE: HERPED1010

Chair with technopolymer shell fully upholstered in grade C or COM with minimum order of 10 pcs and square section steel tube frame 20x20 mm in chrome finish. Available with linking device. Stackable 5 pcs. Lead time 8 weeks for graded-in, 10 weeks for COM.

H 34,45 **W** 18,90 **D** 20,65 **SH** 18,50
COM(yds): 1,50
Location: For indoor use
Pieces per Box: 2
Packaging Volume(m3): 0,34
Gross Weight(lb): 14,35



KUADRA 1051
ITEM CODE: HERPED1051

Chair with technopolymer shell fully upholstered in grade C or COM with minimum order of 10 pcs and steel tube frame Ø16 mm in chrome finish. Available with linking device. Stackable 5 pcs. Lead time 8 weeks for graded-in. Lead time 10 weeks for COM.

H 34,25 **W** 18,10 **D** 20,85 **SH** 18,50
COM(yds): 1,50
Location: For indoor use
Pieces per Box: 2
Packaging Volume(m3): 0,34
Gross Weight(lb): 13,25



KUADRA 1058
ITEM CODE: HERPED1058

Chair with technopolymer shell fully upholstered in grade C or COM with minimum order of 10 pcs and sled steel tube frame Ø16 mm in chrome finish. Available with linking device. Stackable 5 pcs. Lead time 8 weeks for graded-in, 10 weeks for COM.

H 34,25 **W** 19,70 **D** 21,65 **SH** 18,50
COM(yds): 1,50
Location: For indoor use
Pieces per Box: 2
Packaging Volume(m3): 0,34
Gross Weight(lb): 14,35



KUADRA 1101
ITEM CODE: HERPED1101

Chair with technopolymer shell and square section steel tube frame 20x20mm in chrome finish. Available in 2 plastic finishes. Available with linking device. Stackable 8 pcs, 12 on a dolly. Lead time 8 weeks.

H 34,05 **W** 18,10 **D** 20,85 **SH** 18,10
Location: For indoor use
Pieces per Box: 4
Packaging Volume(m3): 0,34
Gross Weight(lb): 13,05



KUADRA 1151
ITEM CODE: HERPED1151

Chair with technopolymer shell and steel tube frame Ø16 mm in chrome finish. Available in 2 plastic finishes. Available with linking device. Stackable 8 pcs, 12 on a dolly. Lead time 8 weeks.

H 33,90 **W** 18,90 **D** 20,90 **SH** 18,10
Location: For indoor use
Pieces per Box: 4
Packaging Volume(m3): 0,34
Gross Weight(lb): 11,50



KUADRA 1158
ITEM CODE: HERPED1158

Chair with technopolymer shell and sled steel tube frame Ø16 mm in chrome finish. Available in 2 plastic finishes. Available with linking device. Stackable 8 pcs, 15 on a dolly. Lead time 8 weeks.

H 34,05 **W** 20,10 **D** 21,25 **SH** 18,10
Location: For indoor use
Pieces per Box: 2
Packaging Volume(m3): 0,28
Gross Weight(lb): 13,05



KUADRA 1321
ITEM CODE: HERPED1321

Chair with veneer shell and square section steel tube frame 20x20mm in chrome finish. Available in 5 veneer finishes. Available with linking device. Stackable 8 pcs, 12 on a dolly. Lead time 8 weeks.

H 33,25 **W** 18,10 **D** 21,25 **SH** 18,10
Location: For indoor use
Pieces per Box: 2
Packaging Volume(m3): 0,28
Gross Weight(lb): 13,05



KUADRA 1321/A
ITEM CODE: HERPED1321-A

Chair with veneer shell and upholstered seat in Grade C or COM with minimum order of 10 pcs and square section steel tube frame 20x20mm in chrome finish. Available in 2 veneer finishes, natural or wedge. Available with linking device. Stackable 5 pcs. Lead time 8 weeks for graded-in. Lead time 10 weeks for COM.

H 33,25 **W** 18,10 **D** 21,25 **SH** 18,10
COM(yds): 0,80
Location: For indoor use
Pieces per Box: 2
Packaging Volume(m3): 0,28
Gross Weight(lb): 15,25

Kuadra Collection

Multi-functional collection. Simple and iconic shell with innovative curved backrest.



KUADRA 1328
ITEM CODE: HERPED1328

Chair with veneer shell and sled steel tube frame Ø16 mm in chrome finish. Available in 5 veneer finishes. Available with linking device. Stackable 8 pcs, 15 on a dolly. Lead time 8 weeks.

H 33,45 **W** 19,70 **D** 21,25 **SH** 18,10

Location: For indoor use

Pieces per Box: 2

Packaging Volume(m3): 0,28

Gross Weight(lb): 12,15



KUADRA 1329
ITEM CODE: HERPED1329

Chair with veneer shell and square section steel tube frame 20x20mm in chrome finish with tablet. Available in 5 veneer finishes. Available with linking device. Lead time 8 weeks.

H 33,05 **W** 20,10 **D** 27,55 **SH** 18,10

Location: For indoor use

Pieces per Box: 2

Packaging Volume(m3): 0,28

Gross Weight(lb): 16,15



KUADRA 1329-TP
ITEM CODE: HERPED1329-TP

Chair with removable armrest and solid laminate board with antipanic articulated joint. Technopolymer shell and steel tube frame Ø16 mm in chrome finish. Shell available in 2 plastic colours and legs in chrome finish. Lead time 8 weeks.

H 34,05 **W** 19,70 **D** 21,10 **SH** 18,10 **AH** 27,20

Location: For indoor use

Pieces per Box: 2

Packaging Volume(m3): 0,28

Gross Weight(lb): 15,43



KUADRA 1331
ITEM CODE: HERPED1331

Chair with veneer shell and steel tube frame Ø16 mm in chrome finish. Available in 5 veneer finishes. Available with linking device. Stackable 8 pcs, 12 on a dolly. Lead time 8 weeks.

H 33,25 **W** 18,90 **D** 21,25 **SH** 18,10

Location: For indoor use

Pieces per Box: 2

Packaging Volume(m3): 0,28

Gross Weight(lb): 11,50



KUADRA 1055
ITEM CODE: HERPED1055

Armchair with technopolymer shell fully upholstered in grade C or COM with minimum order of 10 pcs and steel tube frame Ø16 mm in chrome finish. Available linking device. Stackable 5 pcs. Lead time 8 weeks for graded-in, 10 weeks for COM.

H 34,25 **W** 20,45 **D** 20,85 **SH** 18,50 **AH** 26,00

COM(yds): 1,50

Location: For indoor use

Pieces per Box: 2

Packaging Volume(m3): 0,35

Gross Weight(lb): 15,90



KUADRA 1115
ITEM CODE: HERPED1115

Armchair with technopolymer shell and steel tube frame Ø16 mm in chrome finish. Available with linking device. Stackable 6 pcs. Lead time 8 weeks for graded-in, 10 weeks for COM.

H 34,05 **W** 20,45 **D** 20,45 **SH** 17,70 **AH** 26,20

Location: For indoor use

Pieces per Box: 2

Packaging Volume(m3): 0,35

Gross Weight(lb): 15,25



KUADRA 1335
ITEM CODE: HERPED1335

Armchair with veneer shell and square section steel tube frame Ø16 mm in chrome finish. Available in 5 veneer finishes. Available with linking device. Stackable 6 pcs. Lead time 8 weeks.

H 32,70 **W** 20,85 **D** 20,85 **SH** 17,70 **AH** 26,00

Location: For indoor use

Pieces per Box: 2

Packaging Volume(m3): 0,35

Gross Weight(lb): 15,45



CG
ITEM CODE: HERPED1329CG

Side linking device in chromed steel to be fixed under the seat. Lead time 8 weeks.

H 0,90 **W** 14,60 **D** 12,60

Location: For indoor use

Pieces per Box: 2

Packaging Volume(m3): 0,35

Gross Weight(lb): 11,50

Kuadra Collection

Multi-functional collection. Simple and iconic shell with innovative curved backrest.



KUADRA 1102
ITEM CODE: HERPED1102

Counterstool with technopolymer shell and square section steel tube frame 20x20 mm. Available in 2 plastic colours and chrome finish. Stackable 4 pcs. Lead time 8 weeks.

H 35,45 **W** 18,30 **D** 19,90 **SH** 25,60

Location: For indoor use

Pieces per Box: 2

Packaging Volume(m3): 0,30

Gross Weight(lb): 13,70



KUADRA 1106
ITEM CODE: HERPED1106

Barstool with technopolymer shell and square section steel tube frame 20x20 mm. Available in 2 plastic colours and chrome finish. Stackable 4 pcs. Lead time 8 weeks.

H 42,70 **W** 18,50 **D** 21,25 **SH** 31,50

Location: For indoor use

Pieces per Box: 2

Packaging Volume(m3): 0,38

Gross Weight(lb): 16,60



KUADRA 1112
ITEM CODE: HERPED1112

Counterstool with technopolymer shell and steel tube frame Ø16 mm. Available in 2 plastic colours and chrome finish. Stackable 4 pcs. Lead time 8 weeks.

H 36,40 **W** 19,50 **D** 20,50 **SH** 26,40

Location: For indoor use

Pieces per Box: 2

Packaging Volume(m3): 0,30

Gross Weight(lb): 13,90



KUADRA 1116
ITEM CODE: HERPED1116

Barstool with technopolymer shell and steel tube frame Ø16 mm. Available in 2 plastic colours and chrome finish. Stackable 4 pcs. Lead time 8 weeks.

H 40,15 **W** 20,10 **D** 21,25 **SH** 30,30

Location: For indoor use

Pieces per Box: 2

Packaging Volume(m3): 0,33

Gross Weight(lb): 14,60



KUADRA 1122
ITEM CODE: HERPED1122

Counterstool with technopolymer shell fully upholstered in grade C or COM with minimum order of 10 pcs and steel tube frame 20x20mm in chrome finish. Lead time 8 weeks for graded-in, 10 weeks for COM.

H 36,25 **W** 18,50 **D** 19,90 **SH** 26,40

COM(yds): 1,20

Location: For indoor use

Pieces per Box: 1

Packaging Volume(m3): 0,33

Gross Weight(lb): 15,40



KUADRA 1126
ITEM CODE: HERPED1126

Barstool with technopolymer shell fully upholstered in grade C or COM with minimum order of 10 pcs and steel tube frame 20x20mm in chrome finish. Lead time 8 weeks for graded-in, 10 weeks for COM.

H 42,15 **W** 18,50 **D** 21,25 **SH** 32,30

COM(yds): 1,20

Location: For indoor use

Pieces per Box: 1

Packaging Volume(m3): 0,33

Gross Weight(lb): 20,25



KUADRA 1132
ITEM CODE: HERPED1132

Counterstool with technopolymer shell fully upholstered in grade C or COM with minimum order of 10 pcs and steel tube frame Ø16 mm in chrome finish. Lead time 8 weeks for graded-in, 10 weeks for COM.

H 35,05 **W** 18,50 **D** 21,25 **SH** 26,40

COM(yds): 1,30

Location: For indoor use

Pieces per Box: 1

Packaging Volume(m3): 0,33

Gross Weight(lb): 14,30



KUADRA 1136
ITEM CODE: HERPED1136

Barstool with technopolymer shell fully upholstered in grade C or COM with minimum order of 10 pcs and steel tube frame Ø16 mm in chrome finish. Lead time 8 weeks for graded-in 10 weeks for COM.

H 40,95 **W** 18,50 **D** 21,25 **SH** 31,10

COM(yds): 1,25

Location: For indoor use

Pieces per Box: 1

Packaging Volume(m3): 0,33

Gross Weight(lb): 16,50

Kuadra Collection

Multi-functional collection. Simple and iconic shell with innovative curved backrest.



KUADRA 1322
ITEM CODE: HERPED1322

Counterstool with veneer shell and square section steel tube frame 20x20mm. Available in 5 veneer finishes. Stackable 4 pcs. Lead time 8 weeks.

H 35,05 **W** 18,30 **D** 19,90 **SH** 25,60

Location: For indoor use
Pieces per Box: 2
Packaging Volume(m3): 0,30
Gross Weight(lb): 13,25



KUADRA 1326
ITEM CODE: HERPED1326

Barstool with veneer shell and square section steel tube frame 20x20mm. Available in 5 veneer finishes. Stackable 4 pcs. Lead time 8 weeks.

H 40,55 **W** 18,50 **D** 21,25 **SH** 31,50

Location: For indoor use
Pieces per Box: 2
Packaging Volume(m3): 0,34
Gross Weight(lb): 15,40



KUADRA 1298
ITEM CODE: HEPED1298

Production lead time 8 weeks. Chair with technopolymer shell fully upholstered in grade F01-F19 and sled steel tube frame Ø16 mm in chrome or 4 powder coated finishes. Available with linking device. Stackable 5 pcs. Warranty 2 years against construction defects.

H 34,05 **W** 18,10 **D** 20,85 **SH** 18,50

COM(yds): ---
COL(sq ft): ---
Location: For indoor use
Stackability: 4
Pieces per Box: 2
Packaging Volume(m3): 0,34
Gross Weight(lb): 14,30



KUADRA 1281
ITEM CODE: HEPED1281

Production lead time 8 weeks. Chair with technopolymer shell fully upholstered in grade F01-F19 and steel tube frame Ø16 mm in chrome or 4 powder coated finishes. Available with linking device. Stackable 4 pcs. Warranty 2 years against construction defects.

H 34,05 **W** 18,10 **D** 20,85 **SH** 18,50

COM(yds): ---
COL(sq ft): ---
Location: For indoor use
Stackability: 4
Pieces per Box: 2
Packaging Volume(m3): 0,34
Gross Weight(lb): 14,30



KUADRA 1332
ITEM CODE: HERPED1332

Counterstool with veneer shell and steel tube frame Ø16 mm. Available in 5 veneer finishes. Stackable 4 pcs. Lead time 8 weeks.

H 36,25 **W** 19,50 **D** 20,50 **SH** 26,40

Location: For indoor use
Pieces per Box: 2
Packaging Volume(m3): 0,32
Gross Weight(lb): 14,30



KUADRA 1336
ITEM CODE: HERPED1336

Barstool with veneer shell and steel tube frame Ø16 mm. Available in 5 veneer finishes. Stackable 4 pcs. Lead time 8 weeks.

H 40,15 **W** 20,10 **D** 21,45 **SH** 30,30

Location: For indoor use
Pieces per Box: 2
Packaging Volume(m3): 0,33
Gross Weight(lb): 14,33



KUADRA 1291
ITEM CODE: HEPED1291

Production lead time 8 weeks. Chair with technopolymer shell fully upholstered in grade F01-F19 and square section steel tube frame 20x20 mm in chrome or 4 powder coated finishes. Available with linking device. Stackable 5 pcs. Warranty 2 years against construction defects.

H 34,45 **W** 18,90 **D** 20,65 **SH** 18,50

COM(yds): ---
COL(sq ft): ---
Location: For indoor use
Stackability: 5
Pieces per Box: 2
Packaging Volume(m3): 0,34
Gross Weight(lb): 14,35



KUADRA 1285
ITEM CODE: HEPED1285

Production lead time 8 weeks for graded-in. Armchair with technopolymer shell fully upholstered in grade F01-F19 and steel tube frame Ø16 mm in chrome or 4 powder coated finishes. Available with linking device. Stackable 5 pcs. Warranty 2 years against construction defects.

H 34,05 **W** 20,50 **D** 20,85 **SH** 18,30 **AH** 26,00

COM(yds): ---
COL(sq ft): ---
Location: For indoor use
Stackability: 5
Pieces per Box: 2
Packaging Volume(m3): 0,35
Gross Weight(lb): 15,85

Kuadra Collection



KUADRA 4429

ITEM CODE: HEPED4429

Production lead time 8 weeks. Barstool with veneer shell and square section steel tube frame 20x20mm in satinized finish with return mechanism. Available in 3 veneer finishes. Warranty 2 years against construction defects.

H 40,55 **W** 15,75 **D** 18,10 **SH** 30,70
COM(yds): ---
COL(sq ft): ---
Location: For indoor use
Pieces per Box: 1
Packaging Volume(m3): 0,14
Gross Weight(lb): 44,00



KUADRA 1332/F

ITEM CODE: HEPED1332-F

Production lead time 8 weeks. Counter stool with fully upholstered shell in grade F01-F19 and steel tube frame Ø16 mm in chrome or 4 powder coated finishes. Warranty 2 years against construction defects.

H 29,95 **W** 19,30 **D** 20,50 **SH** 26,35
COM(yds): ---
COL(sq ft): ---
Location: For indoor use
Pieces per Box: 1
Packaging Volume(m3): 0,30
Gross Weight(lb): 13,20



KUADRA 1326/F

ITEM CODE: HEPED1326-F

Production lead time 8 weeks. Barstool with fully upholstered shell in grade F01-F09 and square section steel tube frame 20x20mm in chrome or 4 powder coated finishes. Warranty 2 years against construction defects.

H 38,00 **W** 18,30 **D** 21,45 **SH** 31,50
COM(yds): ---
COL(sq ft): ---
Location: For indoor use
Pieces per Box: 1
Packaging Volume(m3): 0,30
Gross Weight(lb): 16,40



KUADRA 4427/F

ITEM CODE: HEPED4427-F

Production lead time 8 weeks. Counter stool with full upholstered shell in grade F01-F19 and square section steel tube frame 20x20mm in satinized finish with return mechanism. Warranty 2 years against construction defects.

H 30,10 **W** 15,95 **D** 19,30 **SH** 25,60
COM(yds): ---
COL(sq ft): ---
Location: For indoor use
Pieces per Box: 1
Packaging Volume(m3): 0,14
Gross Weight(lb): 44,00



KUADRA 1322/F

ITEM CODE: HEPED1322-F

Production lead time 8 weeks. Counter stool with fully upholstered shell in grade F01-F19 and square section steel tube frame 20x20mm in chrome or 4 powder coated finishes. Warranty 2 years against construction defects.

H 30,30 **W** 17,70 **D** 21,25 **SH** 25,60
COM(yds): ---
COL(sq ft): ---
Location: For indoor use
Pieces per Box: 1
Packaging Volume(m3): 0,30
Gross Weight(lb): 14,30



KUADRA 1336/F

ITEM CODE: HEPED1336-F

Production lead time 8 weeks. Barstool with fully upholstered shell in grade F01-F19 and steel tube frame Ø16 mm in chrome or 4 powder coated finishes. Warranty 2 years against construction defects.

H 34,65 **W** 19,30 **D** 21,45 **SH** 30,30
COM(yds): ---
COL(sq ft): ---
Location: For indoor use
Pieces per Box: 1
Packaging Volume(m3): 0,30
Gross Weight(lb): 21,70



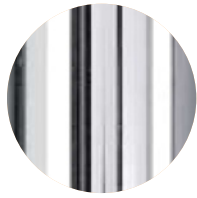
KUADRA 4429/F

ITEM CODE: HEPED4429-F

Production lead time 8 weeks. Barstool with full upholstered shell in grade F01-F19 and square section steel tube frame 20x20mm in satinized finish with return mechanism. Warranty 2 years against construction defects.

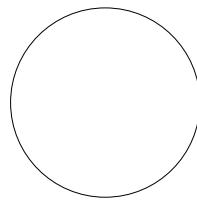
H 36,40 **W** 15,95 **D** 19,30 **SH** 30,70
COM(yds): ---
COL(sq ft): ---
Location: For indoor use
Pieces per Box: 1
Packaging Volume(m3): 0,14
Gross Weight(lb): 44,00

METAL FINISHES
Contemporary collection plated finishes

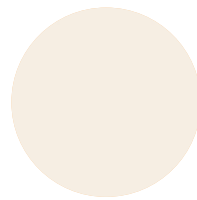


CR
Chromed Steel

PLASTIC FINISHES
Technopolymer

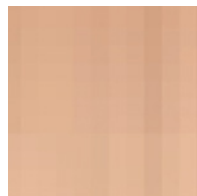


BI



AV

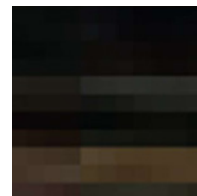
WOOD FINISHES
Contemporary collection



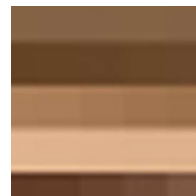
RS



W



EB



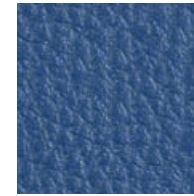
ZB



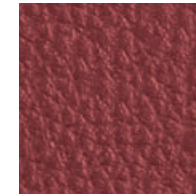
AN

TEXTILES
Contemporary Grade
Grade C

C10-C22(11)



C10



C11



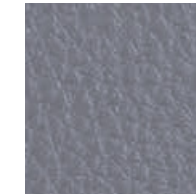
C12



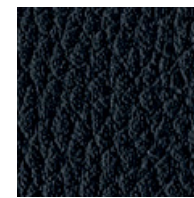
C13



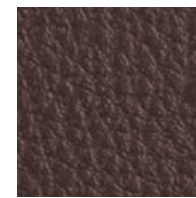
C14



C15



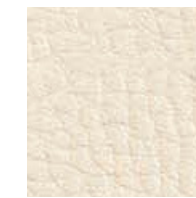
C17



C18



C20

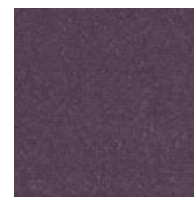


C21

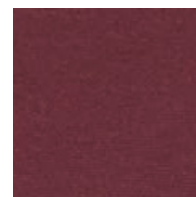


C22

C60-C95(11)



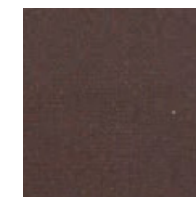
C60



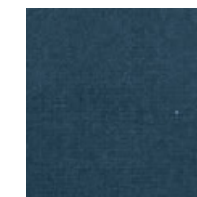
C61



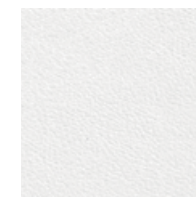
C62



C63



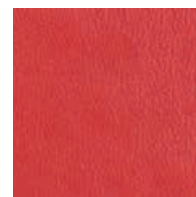
C64



C90



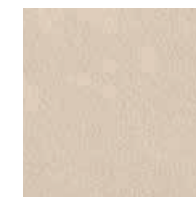
C91



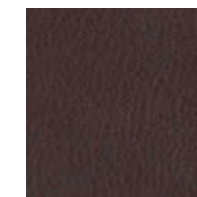
C92



C93

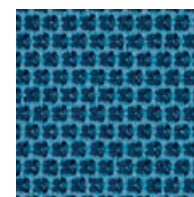


C94

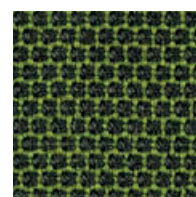


C95

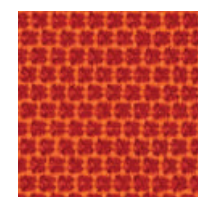
C83-C101 (9)



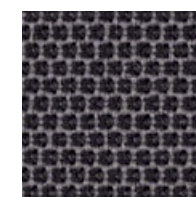
C83



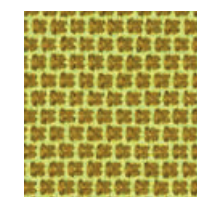
C84



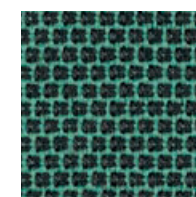
C85



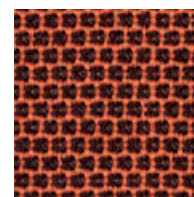
C86



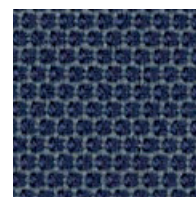
C87



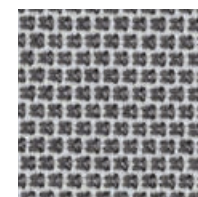
C88



C89



C100



C101