

Jamaica

JAMAICA 2915
JAMAICA 2916



Jamaica 2915

JAMAICA 2915
ITEM CODE: HERPED2915

Production lead time 8 weeks. Ash wood legs and back shell featuring a central lumbar support. Paired with tubular steel Ø16 mm backrest in black powder coated finish. Antique brass available with a surcharge of 130.00. Warranty 2 years against construction defects.

H 29,10 W 21,30 D 19,70 SH 18,10 AH 26,40

Location:	For indoor use
Pieces per Box:	1
Packaging Volume(m3):	0,27
Gross Weight(lb):	12,20



Jamaica 2916

JAMAICA 2916
ITEM CODE: HERPED2916

Production lead time 8 weeks. Ash wood legs with a central lumbar support back shell upholstered in grade C material. COM available for orders of minimum 10 pcs. Paired with tubular steel Ø16 mm backrest in black powder coated finish. Antique brass available with a surcharge of 130.00. Warranty 2 years against construction defects.

H 29,10 **W** 21,30 **D** 19,70 **SH** 18,50 **AH** 26,40

COM(yds): 1,10

COL(sq ft): 20,00

Location: For indoor use

Pieces per Box: 1

Packaging Volume(m3): 0,27

Gross Weight(lb): 12,80



WOOD FINISHES

Contemporary collection



FR



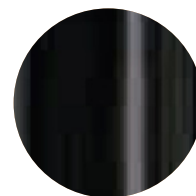
AN

METAL FINISHES

Contemporary collection plated finishes



OA
Antique Brass
steel

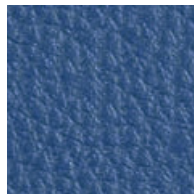


NE

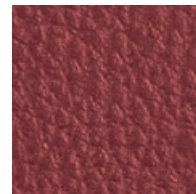
TEXTILES

Contemporary Grade

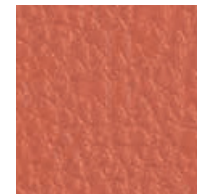
C10-C22(11)



C10



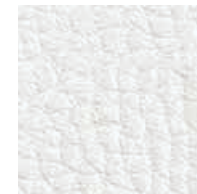
C11



C12



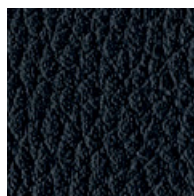
C13



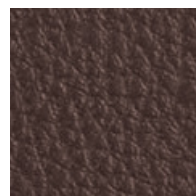
C14



C15



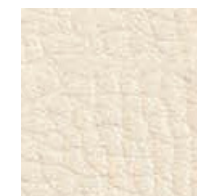
C17



C18



C20



C21

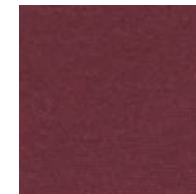


C22

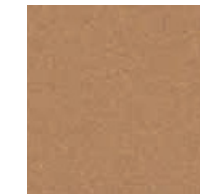
C60-C95(11)



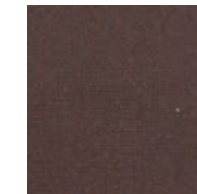
C60



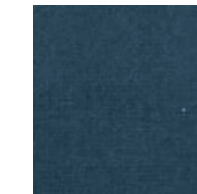
C61



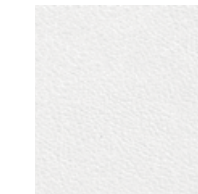
C62



C63



C64



C90



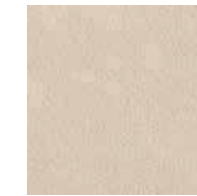
C91



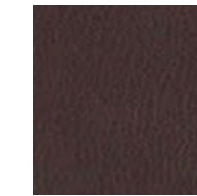
C92



C93

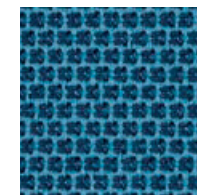


C94

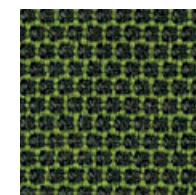


C95

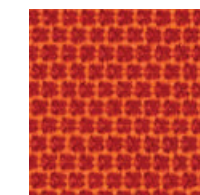
C83-C101 (9)



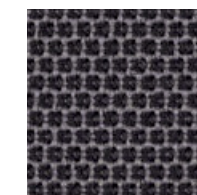
C83



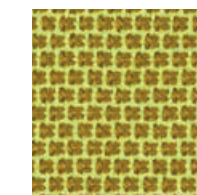
C84



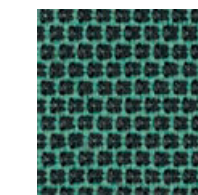
C85



C86



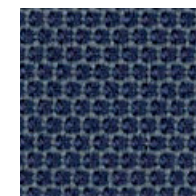
C87



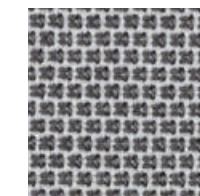
C88



C89



C100



C101

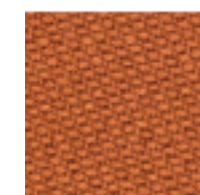
C110-C122(13)



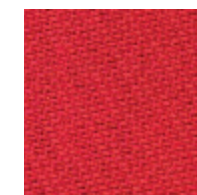
C110



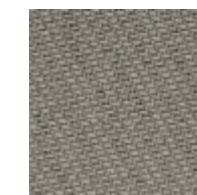
C111



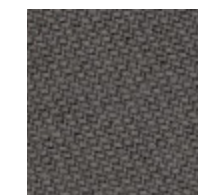
C112



C113



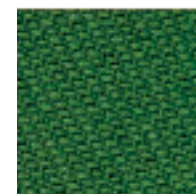
C114



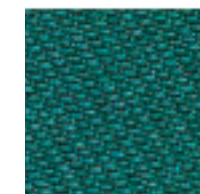
C115



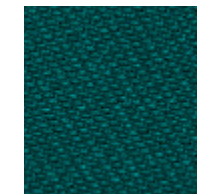
C116



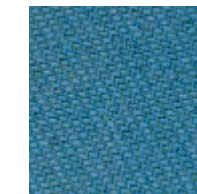
C117



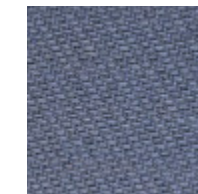
C118



C119



C120



C121



C122