

*Intrigo*

INTRIGO 3715



*Intrigo 3715*

**INTRIGO 3715**  
ITEM CODE: HERPED3715

Production lead time 8 weeks, aluminium frame chair in powder coated finish frame for outdoor use. Stackale 10pcs. Available with upholstered seat surcharge of 200.00 and seat and back with a surcharge of 315.00 with grade D for outdoor use. Warranty 2 years against construction defects.

**H** 31,70   **W** 23,20   **D** 20,90   **SH** 18,10   **AH** 26,00

**Location:** For indoor and outdoor use

**Pieces per Box:** 2

**Stackability:** 10

**Packaging Volume(m3):** 0,35

**Gross Weight(lb):** 13,90



*Intrigo 3715*





## METAL FINISHES

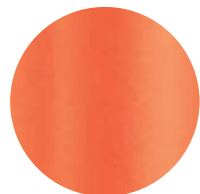
Contemporary collection powder coated for outdoor use



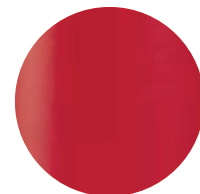
BI200E



BE200E



AR500E



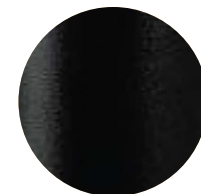
RO200E



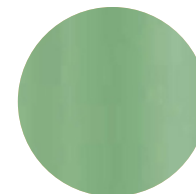
MGE



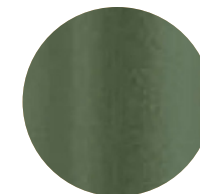
GAE



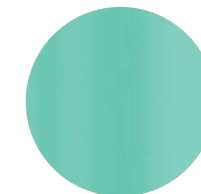
NPE



VE100E



VE300E



AZ100E