

Austin

- AUSTIN 1 CHAIR
- AUSTIN 2 CHAIR
- AUSTIN 1 ARMCHAIR
- AUSTIN 2 ARMCHAIR
- AUSTIN 1 BARSTOOL
- AUSTIN 2 BARSTOOL



Austin 2 Chair

Austin 1 Chair
Austin 1 Armchair
Austin 1 Barstool



Austin 2 Chair
Austin 2 Armchair



Austin 2 Barstool



Austin 2 Counter Stool



Austin Collection



AUSTIN ONE CHAIR
ITEM CODE: HER780CM-1

Beech wood frame. Lead time 8-10 weeks.

H 31,90 **W** 21,25 **D** 24,00 **SH** 19,30
COM(yds): 1,70
COL(sq ft): 31,00
Location: For indoor use
Pieces per Box: 2
Packaging Volume(m3): 0,48
Gross Weight(lb):



AUSTIN TWO CHAIR
ITEM CODE: HER780CM-2

Metal frame in powder coated finish in black and gold or plated finish in antique brass or satin nickel with side stretchers. Lead time 8-10 weeks.

H 31,90 **W** 21,25 **D** 24,00 **SH** 19,30
COM(yds): 1,70
COL(sq ft): 31,00
Location: For indoor use
Pieces per Box: 2
Packaging Volume(m3): 0,48
Gross Weight(lb):



AUSTIN ONE ARMCHAIR
ITEM CODE: HER780AM-1

Beech wood frame. Lead time 8-10 weeks.

H 31,90 **W** 21,25 **D** 24,00 **SH** 19,30 **AH** 25,20
COM(yds): 2,00
COL(sq ft): 36,00
Location: For indoor use
Pieces per Box: 1
Packaging Volume(m3): 0,34
Gross Weight(lb):



AUSTIN TWO ARMCHAIR
ITEM CODE: HER780AM-2

Metal frame in powder coated finish in black and gold or plated finish in antique brass or satin nickel with side stretchers. Lead time 8-10 weeks.

H 31,90 **W** 21,25 **D** 24,00 **SH** 19,30 **AH** 25,20
COM(yds): 2,00
COL(sq ft): 36,00
Location: For indoor use
Pieces per Box: 1
Packaging Volume(m3): 0,34
Gross Weight(lb):



AUSTIN ONE BARSTOOL
ITEM CODE: HER780BM-1

Beech wood frame. Available in counter height with seat height 24". Lead time 8-10 weeks.

H 40,95 **W** 21,25 **D** 20,50 **SH** 31,50
COM(yds): 1,70
COL(sq ft): 31,00
Location: For indoor use
Pieces per Box: 1
Packaging Volume(m3): 0,37
Gross Weight(lb):



AUSTIN TWO BARSTOOL
ITEM CODE: HER780BM-2

Metal frame in powder coated finish in black and gold or plated finish in antique brass or satin nickel. Available in counter height with seat height 24". Lead time 8-10 weeks.

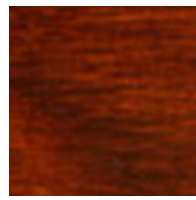
H 40,95 **W** 21,25 **D** 20,50 **SH** 31,50
COM(yds): 1,70
COL(sq ft): 31,00
Location: For indoor use
Pieces per Box: 1
Packaging Volume(m3): 0,37
Gross Weight(lb):

WOOD FINISHES

Modern and Elegance Collections



Black_25717



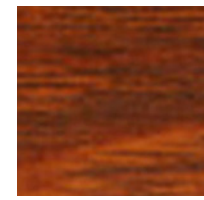
Cappuccino_25718



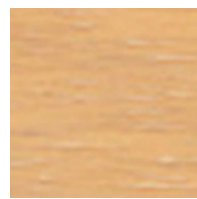
Congac_25517



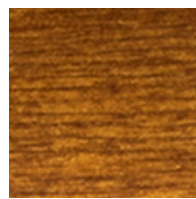
Elle_27162



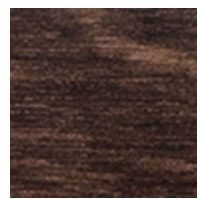
Honey_25716



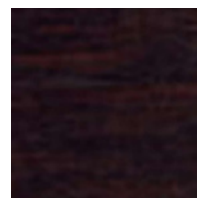
Natural_25528



Safari_27824



Walnut_25397



Wenge_25516



White_Wash_25719

METAL FINISHES

Modern and Elegance Collections



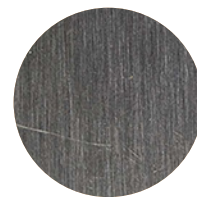
Black Powder Coated



Gold Powder Coated



Antique Brass



Satin Nickel

TEXTILES

Modern and Elegance Grade

Grade 1

Ennis Fabrics



Turner (27)

Grade 2

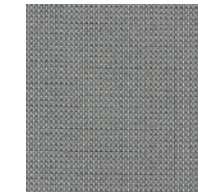
Mayer Fabrics



Caressa (59)



Fedora (25)



Optic (15)



Variant (16)

Grade 3

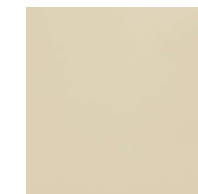
Momentum



Beeline EPU (24)



Cover Cloth (24)



Endurance EPU (36)



Faux Felt (16)



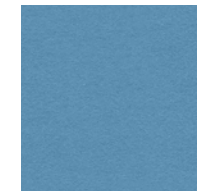
Faux Mo (9)



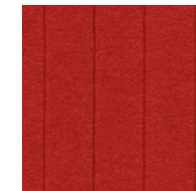
Kit (13)

Grade 4

Camira Fabrics



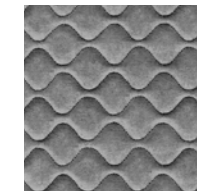
Blazer (50)



Synergy Quilt Channel (8)



Synergy Quilt Chevron (8)



Synergy Quilt Hourglass (8)